

Pumilio 1 Rabbit pAb

Catalog No.: A6108 **1 Publications**

Basic Information

Observed MW

135kDa

Calculated MW

126kDa

Category

Primary antibody

Applications

ELISA, WB, IF/ICC

Cross-Reactivity

Human, Mouse, Rat

Background

This gene encodes a member of the PUF family, evolutionarily conserved RNA-binding proteins related to the Pumilio proteins of *Drosophila* and the fem-3 mRNA binding factor proteins of *C. elegans*. The encoded protein contains a sequence-specific RNA binding domain comprised of eight repeats and N- and C-terminal flanking regions, and serves as a translational regulator of specific mRNAs by binding to their 3' untranslated regions. The evolutionarily conserved function of the encoded protein in invertebrates and lower vertebrates suggests that the human protein may be involved in translational regulation of embryogenesis, and cell development and differentiation. Alternatively spliced transcript variants encoding different isoforms have been described.

Recommended Dilutions

WB	1:500 - 1:1000
IF/ICC	1:50 - 1:100

Immunogen Information

Gene ID

9698

Swiss Prot

Q14671

Immunogen

Recombinant fusion protein containing a sequence corresponding to amino acids 1-280 of human Pumilio 1 (NP_055491.1).

Synonyms

PUMH; HSPUM; PUMH1; PUM1; SCA47; Pumilio 1

Contact

☎ | 400-999-6126

✉ | cn.market@abclonal.com.cn

🌐 | www.abclonal.com.cn

Product Information

Source

Rabbit

Isotype

IgG

Purification

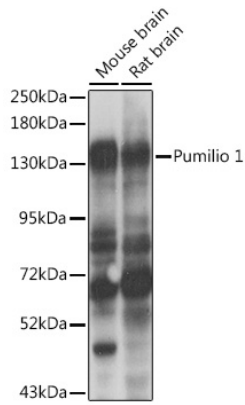
Affinity purification

Storage

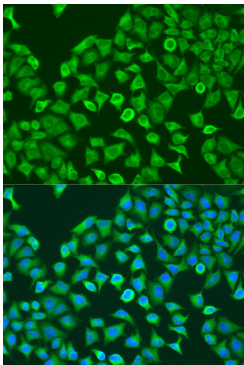
Store at -20°C. Avoid freeze / thaw cycles.

Buffer: PBS with 0.02% sodium azide, 50% glycerol, pH 7.3.

Validation Data



Western blot analysis of extracts of various cell lines, using Pumilio 1 antibody (A6108) at 1:1000 dilution.
Secondary antibody: HRP Goat Anti-Rabbit IgG (H+L) (AS014) at 1:10000 dilution.
Lysates/proteins: 25µg per lane.
Blocking buffer: 3% nonfat dry milk in TBST.
Detection: ECL Enhanced Kit (RM00021).
Exposure time: 15s.



Immunofluorescence analysis of U2OS cells using Pumilio 1 antibody (A6108) at dilution of 1:100. Blue: DAPI for nuclear staining.