

[KO Validated] SMARCC1/BAF155 Rabbit pAb

Catalog No.: A6128 **KO Validated** **1 Publications**

Basic Information

Observed MW

155kDa

Calculated MW

123kDa

Category

Primary antibody

Applications

WB,IP,ELISA

Cross-Reactivity

Human

Background

The protein encoded by this gene is a member of the SWI/SNF family of proteins, whose members display helicase and ATPase activities and which are thought to regulate transcription of certain genes by altering the chromatin structure around those genes. The encoded protein is part of the large ATP-dependent chromatin remodeling complex SNF/SWI and contains a predicted leucine zipper motif typical of many transcription factors.

Recommended Dilutions

WB 1:500 - 1:1000

IP 0.5µg-4µg antibody for
200µg-400µg extracts of
whole cells

ELISA Recommended starting
concentration is 1 µg/mL.
Please optimize the
concentration based on
your specific assay
requirements.

Immunogen Information

Gene ID

6599

Swiss Prot

Q92922

Immunogen

Recombinant protein (or fragment). This information is considered to be commercially sensitive.

Synonyms

HYC5; Rsc8; SRG3; SWI3; BAF155; CRACC1; 55

Contact

☎ | 400-999-6126

✉ | cn.market@abclonal.com.cn

🌐 | www.abclonal.com.cn

Product Information

Source

Rabbit

Isotype

IgG

Purification

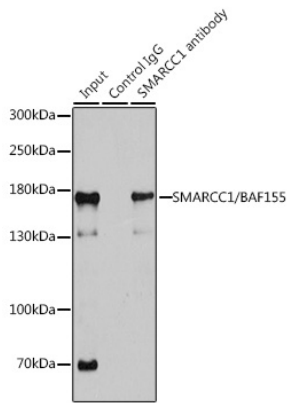
Affinity purification

Storage

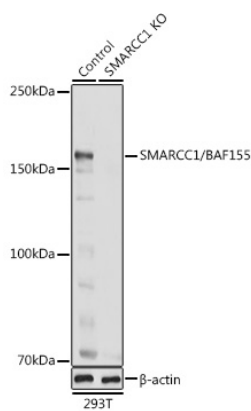
Store at -20°C. Avoid freeze / thaw cycles.

Buffer: PBS containing 50% glycerol, preserved with proclin300 or sodium azide (as specified on the Certificate of Analysis), pH 7.3.

Validation Data



Immunoprecipitation analysis of 200 μ g extracts of 293T cells using 1 μ g SMARCC1/BAF155 antibody (A6128). Western blot was performed from the immunoprecipitate using SMARCC1/BAF155 antibody (A6128) at a dilution of 1:1000.



Western blot analysis of lysates from wild type (WT) and SMARCC1/BAF155 knockout (KO) 293T cells, using [KO Validated] SMARCC1/BAF155 Rabbit pAb (A6128) at 1:1000 dilution.

Secondary antibody: HRP-conjugated Goat anti-Rabbit IgG (H+L) (AS014) at 1:10000 dilution.

Lysates/proteins: 25 μ g per lane.

Blocking buffer: 3% nonfat dry milk in TBST.

Detection: ECL Basic Kit (RM00020).

Exposure time: 1s.