

C11orf30 Rabbit pAb

Catalog No.: A6138

Basic Information

Observed MW

141kDa

Calculated MW

141kDa

Category

Primary antibody

Applications

ELISA, WB, IF/ICC

Cross-Reactivity

Human, Mouse

Background

Predicted to enable identical protein binding activity. Predicted to be involved in DNA repair; chromatin organization; and regulation of transcription, DNA-templated. Located in nucleoplasm.

Recommended Dilutions

WB	1:500 - 1:1000
IF/ICC	1:50 - 1:100

Immunogen Information

Gene ID

56946

Swiss Prot

Q7Z589

Immunogen

Recombinant fusion protein containing a sequence corresponding to amino acids 1153-1322 of human C11orf30 (NP_064578.2).

Synonyms

GL002; C11orf30

Contact

 | 400-999-6126

 | cn.market@abclonal.com.cn

 | www.abclonal.com.cn

Product Information

Source

Rabbit

Isotype

IgG

Purification

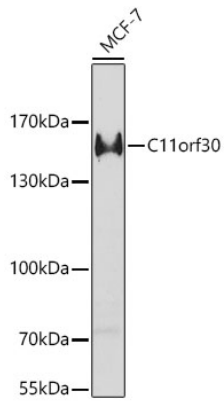
Affinity purification

Storage

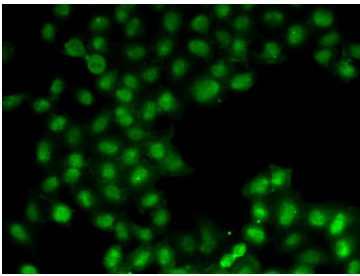
Store at -20°C. Avoid freeze / thaw cycles.

Buffer: PBS with 0.02% sodium azide, 50% glycerol, pH7.3.

Validation Data



Western blot analysis of extracts of MCF-7 cells, using C11orf30 antibody (A6138) at 1:1000 dilution.
Secondary antibody: HRP Goat Anti-Rabbit IgG (H+L) (AS014) at 1:10000 dilution.
Lysates/proteins: 25µg per lane.
Blocking buffer: 3% nonfat dry milk in TBST.
Detection: ECL Enhanced Kit (RM00021).
Exposure time: 60s.



Immunofluorescence analysis of U2OS cells using C11orf30 antibody (A6138).