

ERCC6L Rabbit pAb

Catalog No.: A6139

Basic Information

Observed MW

223kDa

Calculated MW

141kDa

Category

Primary antibody

Applications

ELISA, WB

Cross-Reactivity

Human

Background

This gene encodes a member of the SWItch/Sucrose Non-Fermentable (SWI/SNF2) family of proteins, and contains a SNF2-like ATPase domain and a PICH family domain. One distinguishing feature of this SWI/SNF protein family member is that during interphase, the protein is excluded from the nucleus, and only associates with chromatin after the nuclear envelope has broken down. This protein is a DNA translocase that is thought to bind double-stranded DNA that is exposed to stretching forces, such as those exerted by the mitotic spindle. This protein associates with ribosomal DNA and ultra-fine DNA bridges (UFBs), fine structures that connect sister chromatids during anaphase at some sites such as fragile sites, telomeres and centromeres. This gene is required for the faithful segregation of sister chromatids during mitosis, and the ATPase activity of this protein required for the resolution of UFBs before cytokinesis.

Recommended Dilutions

WB 1:500 - 1:2000

Immunogen Information

Gene ID

54821

Swiss Prot

Q2NKX8

Immunogen

A synthetic peptide corresponding to a sequence within amino acids 300-400 of human ERCC6L (NP_060139.2).

Synonyms

PICH; RAD26L; ERCC6L

Contact

☎ | 400-999-6126

✉ | cn.market@abclonal.com.cn

🌐 | www.abclonal.com.cn

Product Information

Source

Rabbit

Isotype

IgG

Purification

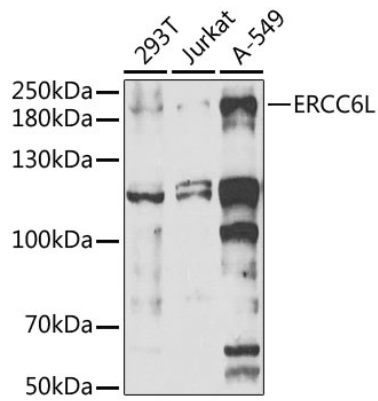
Affinity purification

Storage

Store at -20°C. Avoid freeze / thaw cycles.

Buffer: PBS with 0.02% sodium azide, 50% glycerol, pH7.3.

Validation Data



Western blot analysis of extracts of various cell lines, using ERCC6L antibody (A6139) at 1:1000 dilution.
Secondary antibody: HRP Goat Anti-Rabbit IgG (H+L) (AS014) at 1:10000 dilution.
Lysates/proteins: 25µg per lane.
Blocking buffer: 3% nonfat dry milk in TBST.
Detection: ECL Basic Kit (RM00020).
Exposure time: 90s.