

[KO Validated] SETDB1 Rabbit pAb

Catalog No.: A6145 **KO Validated** **2 Publications**

Basic Information

Observed MW

180kDa

Calculated MW

143kDa

Category

Primary antibody

Applications

ELISA, WB

Cross-Reactivity

Human, Mouse, Rat

Background

This gene encodes a histone methyltransferase which regulates histone methylation, gene silencing, and transcriptional repression. This gene has been identified as a target for treatment in Huntington Disease, given that gene silencing and transcription dysfunction likely play a role in the disease pathogenesis. Alternatively spliced transcript variants of this gene have been described.

Recommended Dilutions

WB 1:500 - 1:1000

Immunogen Information

Gene ID

9869

Swiss Prot

Q15047

Immunogen

Recombinant fusion protein containing a sequence corresponding to amino acids 1-397 of human SETDB1 (NP_001230420.1).

Synonyms

ESET; KG1T; KMT1E; TDRD21; H3-K9-HMTase4; B1

Contact

 | 400-999-6126

 | cn.market@abclonal.com.cn

 | www.abclonal.com.cn

Product Information

Source

Rabbit

Isotype

IgG

Purification

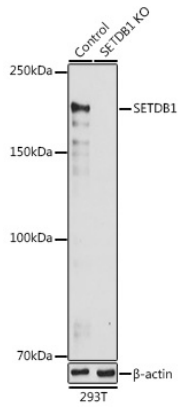
Affinity purification

Storage

Store at -20°C. Avoid freeze / thaw cycles.

Buffer: PBS with 0.01% thimerosal, 50% glycerol, pH7.3.

Validation Data



Western blot analysis of lysates from wild type (WT) and SETDB1 knockout (KO) 293T cells, using [KO Validated] SETDB1 Rabbit pAb (A6145) at 1:1000 dilution.

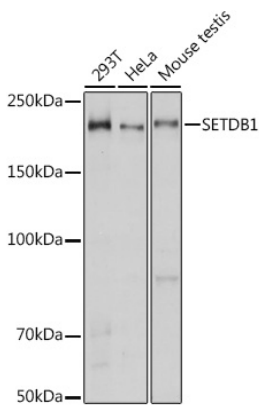
Secondary antibody: HRP-conjugated Goat anti-Rabbit IgG (H+L) (AS014) at 1:10000 dilution.

Lysates/proteins: 25 μ g per lane.

Blocking buffer: 3% nonfat dry milk in TBST.

Detection: ECL Basic Kit (RM00020).

Exposure time: 30s.



Western blot analysis of various lysates using [KO Validated] SETDB1 Rabbit pAb (A6145) at 1:1000 dilution.

Secondary antibody: HRP-conjugated Goat anti-Rabbit IgG (H+L) (AS014) at 1:10000 dilution.

Lysates/proteins: 25 μ g per lane.

Blocking buffer: 3% nonfat dry milk in TBST.

Detection: ECL Basic Kit (RM00020).

Exposure time: 3s.