

MT-ND2 Rabbit pAb

Catalog No.: A6180 **2 Publications**

Basic Information

Observed MW

38kDa

Calculated MW

38kDa

Category

Primary antibody

Applications

ELISA, WB

Cross-Reactivity

Mouse, Rat

Background

Predicted to enable NADH dehydrogenase (ubiquinone) activity; ionotropic glutamate receptor binding activity; and protein kinase binding activity. Acts upstream of or within reactive oxygen species metabolic process. Located in mitochondrion. Is expressed in early conceptus and secondary oocyte. Human ortholog(s) of this gene implicated in Leber hereditary optic neuropathy; multiple sclerosis; myocardial infarction; neurodegenerative disease (multiple); and urinary bladder cancer. Orthologous to human MT-ND2 (mitochondrially encoded NADH:ubiquinone oxidoreductase core subunit 2).

Recommended Dilutions

WB 1:500 - 1:1000

Immunogen Information

Gene ID

17717

Swiss Prot

Immunogen

A synthetic peptide corresponding to a sequence within amino acids 50-150 of mouse MT-ND2 (NP_904329.1).

Synonyms

ND2; MT-ND2

Contact

 | 400-999-6126

 | cn.market@abclonal.com.cn

 | www.abclonal.com.cn

Product Information

Source

Rabbit

Isotype

IgG

Purification

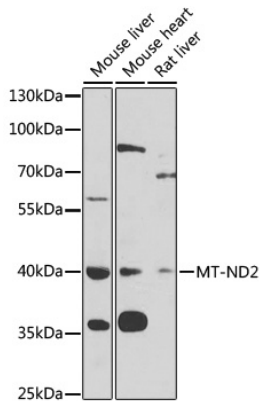
Affinity purification

Storage

Store at -20°C. Avoid freeze / thaw cycles.

Buffer: PBS with 0.02% sodium azide, 50% glycerol, pH 7.3.

Validation Data



Western blot analysis of various lysates using MT-ND2 Rabbit pAb (A6180) at 1:1000 dilution.
Secondary antibody: HRP Goat Anti-Rabbit IgG (H+L) (AS014) at 1:10000 dilution.
Lysates/proteins: 25µg per lane.
Blocking buffer: 3% nonfat dry milk in TBST.
Detection: ECL Basic Kit (RM00020).
Exposure time: 90s.