

LY86 Rabbit pAb

Catalog No.: A6185

Basic Information

Observed MW

24kDa

Calculated MW

18kDa

Category

Primary antibody

Applications

ELISA, WB, IHC-P

Cross-Reactivity

Human, Mouse

Background

Acts upstream of or within positive regulation of lipopolysaccharide-mediated signaling pathway. Predicted to be located in extracellular space.

Recommended Dilutions

WB 1:500 - 1:2000

IHC-P 1:50 - 1:200

Immunogen Information

Gene ID

9450

Swiss Prot

O95711

Immunogen

Recombinant fusion protein containing a sequence corresponding to amino acids 21-162 of human LY86 (NP_004262.1).

Synonyms

MD1; MD-1; MMD-1; dj80N2.1; LY86

Contact

☎ | 400-999-6126

✉ | cn.market@abclonal.com.cn

🌐 | www.abclonal.com.cn

Product Information

Source

Rabbit

Isotype

IgG

Purification

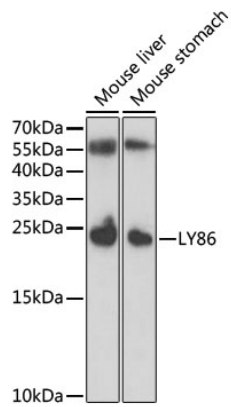
Affinity purification

Storage

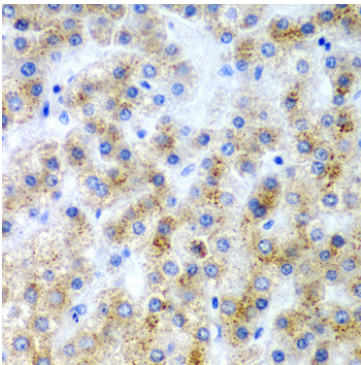
Store at -20°C. Avoid freeze / thaw cycles.

Buffer: PBS with 0.02% sodium azide, 50% glycerol, pH7.3.

Validation Data



Western blot analysis of various lysates using LY86 Rabbit pAb (A6185) at 1:1000 dilution.
Secondary antibody: HRP Goat Anti-Rabbit IgG (H+L) (AS014) at 1:10000 dilution.
Lysates/proteins: 25 μ g per lane.
Blocking buffer: 3% nonfat dry milk in TBST.



Immunohistochemistry analysis of paraffin-embedded Human liver cancer using LY86 Rabbit pAb (A6185) at dilution of 1:200 (40x lens). Perform microwave antigen retrieval with 10 mM PBS buffer pH 7.2 before commencing with IHC staining protocol.