

# $\gamma$ -Tubulin Rabbit pAb

Catalog No.: A6215

## Basic Information

### Observed MW

50kDa

### Calculated MW

51kDa

### Category

Primary antibody

### Applications

ELISA, WB

### Cross-Reactivity

Human, Mouse, Rat

## Background

This gene encodes a member of the tubulin superfamily. The encoded protein localizes to the centrosome where it binds to microtubules as part of a complex referred to as the gamma-tubulin ring complex. The protein mediates microtubule nucleation and is required for microtubule formation and progression of the cell cycle. A pseudogene of this gene is found on chromosome 7.

## Recommended Dilutions

WB 1:500 - 1:1000

## Immunogen Information

### Gene ID

7283

### Swiss Prot

P23258

### Immunogen

Recombinant fusion protein containing a sequence corresponding to amino acids 382-451 of human  $\gamma$ -Tubulin (NP\_001061.2).

### Synonyms

TUBG; GCP-1; CDCBM4; TUBGCP1;  $\gamma$ -Tubulin

## Contact

☎ | 400-999-6126

✉ | [cn.market@abclonal.com.cn](mailto:cn.market@abclonal.com.cn)

🌐 | [www.abclonal.com.cn](http://www.abclonal.com.cn)

## Product Information

### Source

Rabbit

### Isotype

IgG

### Purification

Affinity purification

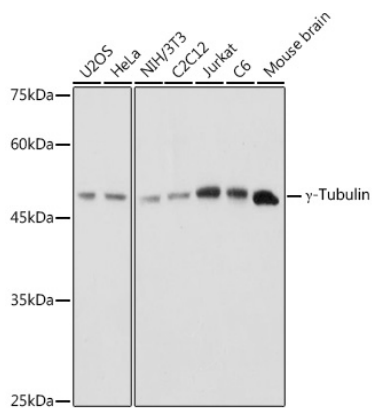
### Storage

Store at -20°C. Avoid freeze / thaw cycles.

Buffer: PBS with 0.05% proclin300, 50% glycerol, pH7.3.

## Validation Data

---



Western blot analysis of extracts of various cell lines, using  $\gamma$ -Tubulin antibody (A6215) at 1:1000 dilution.  
Secondary antibody: HRP Goat Anti-Rabbit IgG (H+L) (AS014) at 1:10000 dilution.  
Lysates/proteins: 25 $\mu$ g per lane.  
Blocking buffer: 3% nonfat dry milk in TBST.  
Detection: ECL Basic Kit (RM00020).  
Exposure time: 1s.