

# CBX4 Rabbit pAb

Catalog No.: A6221 **1 Publications**

## Basic Information

### Observed MW

85kDa

### Calculated MW

61kDa

### Category

Primary antibody

### Applications

ELISA, WB

### Cross-Reactivity

Human, Mouse

## Background

Enables SUMO binding activity; SUMO ligase activity; and enzyme binding activity. Involved in negative regulation of transcription by RNA polymerase II. Located in nuclear body. Part of PRC1 complex. Implicated in hepatocellular carcinoma. Biomarker of hepatocellular carcinoma.

## Recommended Dilutions

WB 1:500 - 1:1000

## Immunogen Information

### Gene ID

8535

### Swiss Prot

O00257

### Immunogen

Recombinant fusion protein containing a sequence corresponding to amino acids 401-560 of human CBX4 (NP\_003646.2).

### Synonyms

PC2; NBP16; CBX4

## Contact

☎ | 400-999-6126

✉ | [cn.market@abclonal.com.cn](mailto:cn.market@abclonal.com.cn)

🌐 | [www.abclonal.com.cn](http://www.abclonal.com.cn)

## Product Information

### Source

Rabbit

### Isotype

IgG

### Purification

Affinity purification

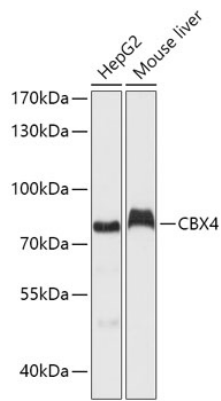
### Storage

Store at -20°C. Avoid freeze / thaw cycles.

Buffer: PBS with 0.02% sodium azide, 50% glycerol, pH7.3.

## Validation Data

---



Western blot analysis of various lysates using CBX4 Rabbit pAb (A6221) at 1:1000 dilution.  
Secondary antibody: HRP Goat Anti-Rabbit IgG (H+L) (AS014) at 1:10000 dilution.  
Lysates/proteins: 25 $\mu$ g per lane.  
Blocking buffer: 3% nonfat dry milk in TBST.  
Detection: ECL Basic Kit (RM00020).  
Exposure time: 60s.