

CD5L Rabbit pAb

Catalog No.: A6223

Basic Information

Observed MW

35kDa

Calculated MW

38kDa

Category

Primary antibody

Applications

ELISA, WB

Cross-Reactivity

Human, Mouse

Background

Predicted to enable serine-type endopeptidase activity. Predicted to be involved in zymogen activation. Predicted to act upstream of or within positive regulation of complement-dependent cytotoxicity and regulation of complement activation. Located in cell surface.

Recommended Dilutions

WB 1:500 - 1:2000

Immunogen Information

Gene ID

922

Swiss Prot

O43866

Immunogen

Recombinant fusion protein containing a sequence corresponding to amino acids 20-347 of human CD5L (NP_005885.1).

Synonyms

AIM; API6; CT-2; hAIM; PRO229; Spalpha; SP-ALPHA; CD5L

Contact

 | 400-999-6126

 | cn.market@abclonal.com.cn

 | www.abclonal.com.cn

Product Information

Source

Rabbit

Isotype

IgG

Purification

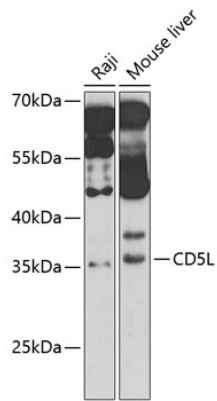
Affinity purification

Storage

Store at -20°C. Avoid freeze / thaw cycles.

Buffer: PBS with 0.02% sodium azide, 50% glycerol, pH 7.3.

Validation Data



Western blot analysis of extracts of various cell lines, using CD5L antibody (A6223) at 1:1000 dilution. Secondary antibody: HRP Goat Anti-Rabbit IgG (H+L) (AS014) at 1:10000 dilution. Lysates/proteins: 25µg per lane. Blocking buffer: 3% nonfat dry milk in TBST. Detection: ECL Basic Kit (RM00020). Exposure time: 70s.