

SQS/FDFT1 Rabbit pAb

Catalog No.: A6229

Basic Information

Observed MW

48kDa

Calculated MW

48kDa

Category

Primary antibody

Applications

WB, IHC-P, IF/ICC, ELISA

Cross-Reactivity

Human, Mouse, Rat

Background

This gene encodes a membrane-associated enzyme located at a branch point in the mevalonate pathway. The encoded protein is the first specific enzyme in cholesterol biosynthesis, catalyzing the dimerization of two molecules of farnesyl diphosphate in a two-step reaction to form squalene.

Recommended Dilutions

WB 1:500 - 1:1000

IHC-P 1:50 - 1:200

IF/ICC 1:50 - 1:200

ELISA Recommended starting concentration is 1 µg/mL. Please optimize the concentration based on your specific assay requirements.

Immunogen Information

Gene ID

2222

Swiss Prot

P37268

Immunogen

Recombinant fusion protein containing a sequence corresponding to amino acids 1-260 of human SQS/FDFT1 (NP_004453.3).

Synonyms

SS; SQS; DGPT; ERG9; SQSD; SQS/FDFT1

Contact

☎ | 400-999-6126

✉ | cn.market@abclonal.com.cn

🌐 | www.abclonal.com.cn

Product Information

Source

Rabbit

Isotype

IgG

Purification

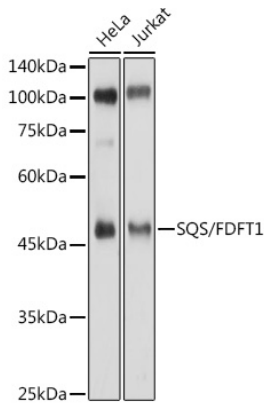
Affinity purification

Storage

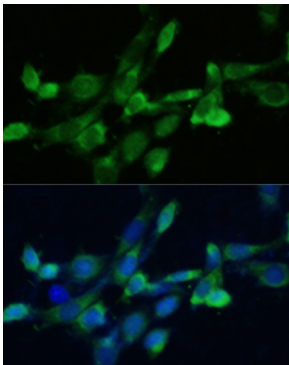
Store at -20°C. Avoid freeze / thaw cycles.

Buffer: PBS with 0.02% sodium azide, 50% glycerol, pH 7.3.

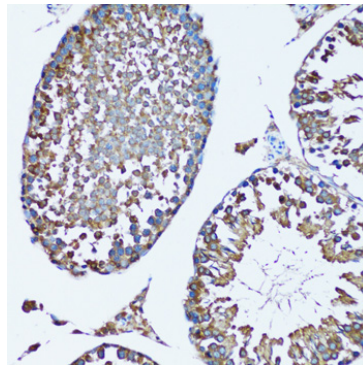
Validation Data



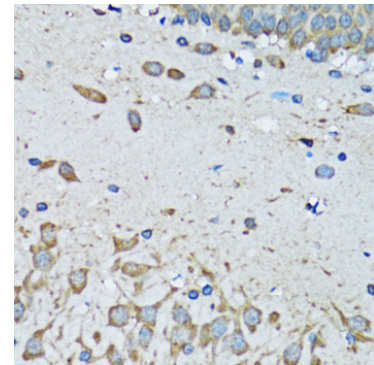
Western blot analysis of various lysates using SQS/FDFT1 Rabbit pAb (A6229) at 1:500 dilution. Secondary antibody: HRP-conjugated Goat anti-Rabbit IgG (H+L) (AS014) at 1:10000 dilution. Lysates/proteins: 25µg per lane. Blocking buffer: 3% nonfat dry milk in TBST. Detection: ECL Enhanced Kit (RM00021). Exposure time: 1s.



Immunofluorescence analysis of NIH-3T3 cells using SQS/FDFT1 Rabbit pAb (A6229) at dilution of 1:100. Secondary antibody: Cy3-conjugated Goat anti-Rabbit IgG (H+L) (AS007) at 1:500 dilution. Blue: DAPI for nuclear staining.



Immunohistochemistry analysis of paraffin-embedded Mouse testis using SQS/FDFT1 Rabbit pAb (A6229) at dilution of 1:100 (20x lens). Microwave antigen retrieval performed with 0.01M PBS Buffer (pH 7.2) prior to IHC staining.



Immunohistochemistry analysis of paraffin-embedded Mouse brain using SQS/FDFT1 Rabbit pAb (A6229) at dilution of 1:100 (40x lens). Microwave antigen retrieval performed with 0.01M PBS Buffer (pH 7.2) prior to IHC staining.