

KCNJ5 Rabbit pAb

Catalog No.: A6232

Basic Information

Observed MW

47kDa

Calculated MW

48kDa

Category

Primary antibody

Applications

WB, ELISA

Cross-Reactivity

Human, Mouse, Rat

Background

This gene encodes an integral membrane protein which belongs to one of seven subfamilies of inward-rectifier potassium channel proteins called potassium channel subfamily J. The encoded protein is a subunit of the potassium channel which is homotetrameric. It is controlled by G-proteins and has a greater tendency to allow potassium to flow into a cell rather than out of a cell. Naturally occurring mutations in this gene are associated with aldosterone-producing adenomas.

Recommended Dilutions

WB 1:500 - 1:2000

ELISA Recommended starting concentration is 1 µg/mL. Please optimize the concentration based on your specific assay requirements.

Immunogen Information

Gene ID

3762

Swiss Prot

P48544

Immunogen

Synthetic peptide. This information is considered to be commercially sensitive.

Synonyms

CIR; GIRK4; KATP1; LQT13; KIR3.4; KCNJ5

Contact

☎ | 400-999-6126

✉ | cn.market@abclonal.com.cn

🌐 | www.abclonal.com.cn

Product Information

Source

Rabbit

Isotype

IgG

Purification

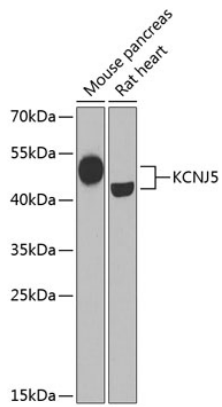
Affinity purification

Storage

Store at -20°C. Avoid freeze / thaw cycles.

Buffer: PBS containing 50% glycerol, preserved with proclin300 or sodium azide (as specified on the Certificate of Analysis), pH 7.3.

Validation Data



Western blot analysis of various lysates using KCNJ5 Rabbit pAb (A6232) at 1:1000 dilution.
Secondary antibody: HRP-conjugated Goat anti-Rabbit IgG (H+L) (AS014) at 1:10000 dilution.
Lysates/proteins: 25 μ g per lane.
Blocking buffer: 3% nonfat dry milk in TBST.
Detection: ECL Basic Kit (RM00020).
Exposure time: 30s.