

# OAT Rabbit pAb

Catalog No.: A6235 **2 Publications**

## Basic Information

### Observed MW

49kDa

### Calculated MW

49kDa

### Category

Primary antibody

### Applications

ELISA, WB, IHC-P, IP

### Cross-Reactivity

Human, Mouse, Rat

## Background

This gene encodes the mitochondrial enzyme ornithine aminotransferase, which is a key enzyme in the pathway that converts arginine and ornithine into the major excitatory and inhibitory neurotransmitters glutamate and GABA. Mutations that result in a deficiency of this enzyme cause the autosomal recessive eye disease Gyrate Atrophy. Alternatively spliced transcript variants encoding different isoforms have been described. Related pseudogenes have been defined on the X chromosome.

## Recommended Dilutions

**WB** 1:500 - 1:2000

**IHC-P** 1:50 - 1:200

**IP** 0.5µg-4µg antibody for  
200µg-400µg extracts of  
whole cells

## Immunogen Information

### Gene ID

4942

### Swiss Prot

P04181

### Immunogen

Recombinant fusion protein containing a sequence corresponding to amino acids 160-439 of human OAT (NP\_000265.1).

### Synonyms

OKT; GACR; HOGA; OATASE; OAT

## Contact

☎ | 400-999-6126

✉ | [cn.market@abclonal.com.cn](mailto:cn.market@abclonal.com.cn)

🌐 | [www.abclonal.com.cn](http://www.abclonal.com.cn)

## Product Information

### Source

Rabbit

### Isotype

IgG

### Purification

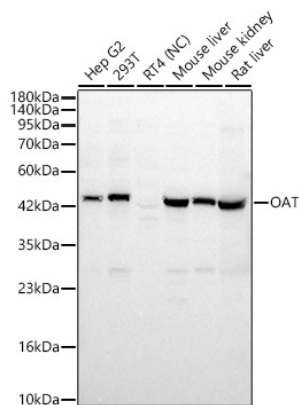
Affinity purification

### Storage

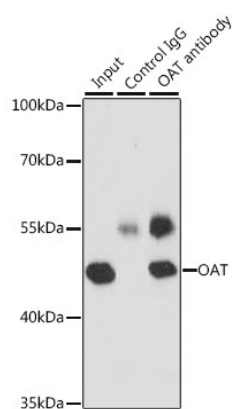
Store at -20°C. Avoid freeze / thaw cycles.

Buffer: PBS with 0.02% sodium azide, 50% glycerol, pH7.3.

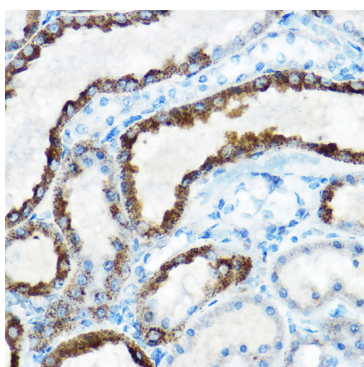
## Validation Data



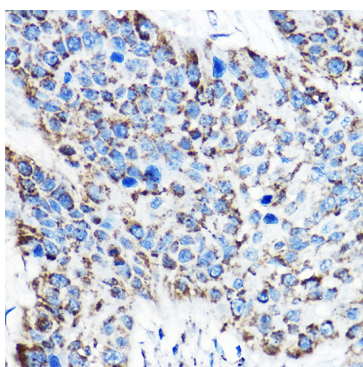
Western blot analysis of various lysates using OAT Rabbit pAb (A6235) at 1:2000 dilution.  
 Secondary antibody: HRP Goat Anti-Rabbit IgG (H+L) (A5014) at 1:10000 dilution.  
 Lysates/proteins: 25 µg per lane.  
 Blocking buffer: 3% nonfat dry milk in TBST.  
 Detection: ECL Basic Kit (RM00020).  
 Negative control (NC): RT4.  
 Exposure time: 30s.



Immunoprecipitation analysis of 200 µg extracts of MCF-7 cells, using 3 µg OAT antibody (A6235).  
 Western blot was performed from the immunoprecipitate using OAT antibody (A6235) at a dilution of 1:1000.



Immunohistochemistry analysis of OAT in paraffin-embedded rat kidney using OAT Rabbit pAb (A6235) at dilution of 1:100 (40x lens). Perform high pressure antigen retrieval with 10 mM citrate buffer pH 6.0 before commencing with IHC staining protocol.



Immunohistochemistry analysis of OAT in paraffin-embedded human esophageal cancer using OAT Rabbit pAb (A6235) at dilution of 1:100 (40x lens). Perform high pressure antigen retrieval with 10 mM citrate buffer pH 6.0 before commencing with IHC staining protocol.