

# HSD17B13 Rabbit pAb

Catalog No.: A6256

1 Publications

## Basic Information

### Observed MW

34kDa

### Calculated MW

34kDa

### Category

Primary antibody

### Applications

WB, IHC-P, IF/ICC, ELISA

### Cross-Reactivity

Human, Mouse, Rat

## Background

Predicted to enable oxidoreductase activity, acting on the CH-OH group of donors, NAD or NADP as acceptor and steroid dehydrogenase activity. Acts upstream of or within positive regulation of lipid biosynthetic process. Located in lipid droplet.

## Recommended Dilutions

<b>WB</b>	1:500 - 1:1000
<b>IHC-P</b>	1:50 - 1:200
<b>IF/ICC</b>	1:50 - 1:200
<b>ELISA</b>	Recommended starting concentration is 1 µg/mL. Please optimize the concentration based on your specific assay requirements.

## Immunogen Information

### Gene ID

345275

### Swiss Prot

Q7Z5P4

### Immunogen

Recombinant protein (or fragment). This information is considered to be commercially sensitive.

### Synonyms

FLDP; SCDR9; NIIL497; SDR16C3; HMFN0376; HSD17B13

## Contact

☎	400-999-6126
✉	cn.market@abclonal.com.cn
🌐	www.abclonal.com.cn

## Product Information

### Source

Rabbit

### Isotype

IgG

### Purification

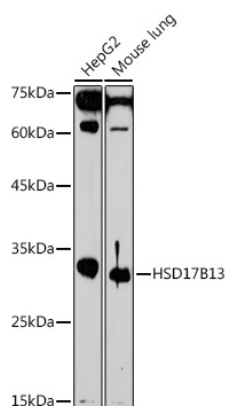
Affinity purification

### Storage

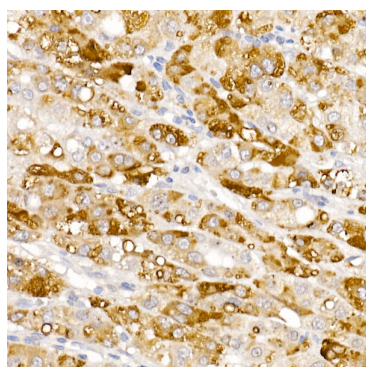
Store at -20°C. Avoid freeze / thaw cycles.

Buffer: PBS containing 50% glycerol, preserved with proclin300 or sodium azide (as specified on the Certificate of Analysis), pH 7.3.

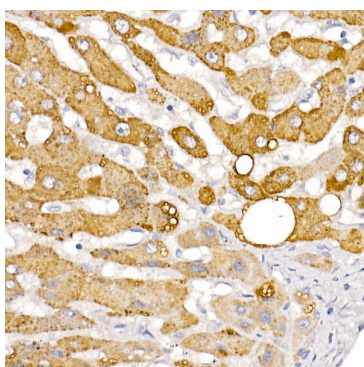
## Validation Data



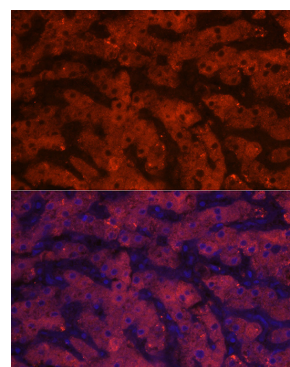
Western blot analysis of various lysates using HSD17B13 Rabbit pAb (A6256) at 1:1000 dilution. Secondary antibody: HRP-conjugated Goat anti-Rabbit IgG (H+L) (AS014) at 1:10000 dilution. Lysates/proteins: 25µg per lane. Blocking buffer: 3% nonfat dry milk in TBST. Detection: ECL Basic Kit (RM00020). Exposure time: 180s.



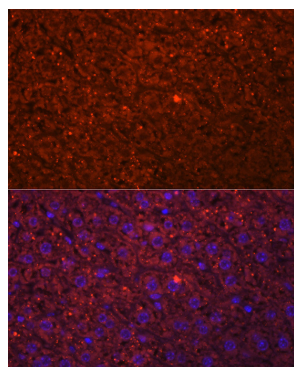
Immunohistochemistry analysis of paraffin-embedded Human liver cancer using HSD17B13 Rabbit pAb (A6256) at dilution of 1:100 (40x lens). High pressure antigen retrieval performed with 0.01M Citrate buffer (pH 6.0) prior to IHC staining.



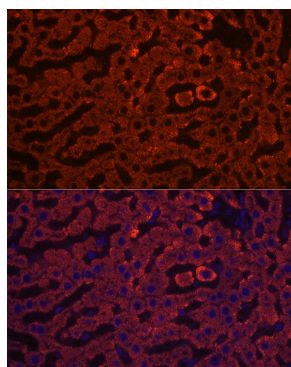
Immunohistochemistry analysis of paraffin-embedded Human liver using HSD17B13 Rabbit pAb (A6256) at dilution of 1:100 (40x lens). High pressure antigen retrieval performed with 0.01M Citrate buffer (pH 6.0) prior to IHC staining.



Immunofluorescence analysis of paraffin-embedded human liver using HSD17B13 Rabbit pAb (A6256) at dilution of 1:20 (40x lens). Secondary antibody: Cy3-conjugated Goat anti-Rabbit IgG (H+L) (AS007) at 1:500 dilution. Blue: DAPI for nuclear staining.



Immunofluorescence analysis of paraffin-embedded mouse liver using HSD17B13 Rabbit pAb (A6256) at dilution of 1:20 (40x lens). Secondary antibody: Cy3-conjugated Goat anti-Rabbit IgG (H+L) (AS007) at 1:500 dilution. Blue: DAPI for nuclear staining.



Immunofluorescence analysis of paraffin-embedded rat liver using HSD17B13 Rabbit pAb (A6256) at dilution of 1:20 (40x lens). Secondary antibody: Cy3-conjugated Goat anti-Rabbit IgG (H+L) (AS007) at 1:500 dilution. Blue: DAPI for nuclear staining.