

# Perilipin-2 Rabbit pAb

Catalog No.: A6276SP **13 Publications**

## Basic Information

### Observed MW

48 kDa

### Calculated MW

48 kDa/46 kDa

### Category

Primary antibody

### Applications

WB,IHC-P,ELISA

### Cross-Reactivity

Human, Mouse, Rat

## Background

The protein encoded by this gene belongs to the perilipin family, members of which coat intracellular lipid storage droplets. This protein is associated with the lipid globule surface membrane material, and maybe involved in development and maintenance of adipose tissue. However, it is not restricted to adipocytes as previously thought, but is found in a wide range of cultured cell lines, including fibroblasts, endothelial and epithelial cells, and tissues, such as lactating mammary gland, adrenal cortex, Sertoli and Leydig cells, and hepatocytes in alcoholic liver cirrhosis, suggesting that it may serve as a marker of lipid accumulation in diverse cell types and diseases. Alternatively spliced transcript variants have been found for this gene.

## Recommended Dilutions

**WB** 1:2000 - 1:5000

**IHC-P** 1:200 - 1:800

**ELISA** Recommended starting concentration is 1 µg/mL. Please optimize the concentration based on your specific assay requirements. For high-ratio antibody dilutions (≥1:10000) a sequential dilution method is strongly recommended to ensure measurement accuracy.

## Immunogen Information

### Gene ID

123/11520

### Swiss Prot

Q99541/P43883

### Immunogen

This information is considered to be commercially sensitive.

### Synonyms

ADFP; ADRP; Perilipin-2; ADPH; Adfp; Adrp

## Product Information

### Source

Rabbit

### Isotype

IgG

### Purification

Affinity purification

### Storage

Store at -20°C. Avoid freeze / thaw cycles.

Buffer: PBS, pH 7.3, containing 50% glycerol. Preserved with Proclin300 or sodium azide.

May contain 0.05% BSA as specified on the Certificate of Analysis.

## Contact

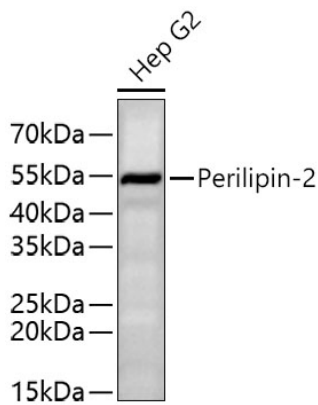
☎ | 400-999-6126

✉ | [cn.market@abclonal.com.cn](mailto:cn.market@abclonal.com.cn)

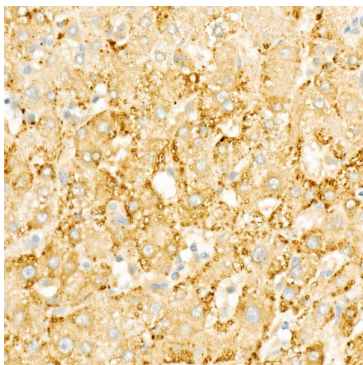
🌐 | [www.abclonal.com.cn](http://www.abclonal.com.cn)

## Validation Data

---



Western blot analysis of lysates from Hep G2 cells using Perilipin-2 Rabbit pAb (A6276SP) at 1:5000 dilution incubated overnight at 4°C.  
Secondary antibody: HRP-conjugated Goat anti-Rabbit IgG (H+L) (AS014) at 1:10000 dilution.  
Lysates/proteins: 25 µg per lane.  
Blocking buffer: 3% nonfat dry milk in TBST.  
Detection: ECL Basic Kit (RM00020).  
Exposure time: 90 s.



Immunohistochemistry analysis of paraffin-embedded Human liver tissue using Perilipin-2 Rabbit pAb (A6276SP) at a dilution of 1:500 (40x lens). High pressure antigen retrieval performed with 0.01M Citrate Buffer (pH 6.0) prior to IHC staining.