

# BTD Rabbit pAb

Catalog No.: A6284

## Basic Information

### Observed MW

61kDa

### Calculated MW

61kDa

### Category

Primary antibody

### Applications

ELISA, WB, IHC-P

### Cross-Reactivity

Human, Mouse, Rat

## Background

The protein encoded by this gene functions to recycle protein-bound biotin by cleaving biocytin (biotin-epsilon-lysine), a normal product of carboxylase degradation, resulting in regeneration of free biotin. The encoded protein has also been shown to have biotinyl transferase activity. Mutations in this gene are associated with biotinidase deficiency. Multiple transcript variants encoding different isoforms have been described.

## Recommended Dilutions

WB	1:500 - 1:2000
IHC-P	1:100 - 1:200

## Immunogen Information

### Gene ID

686

### Swiss Prot

P43251

### Immunogen

Recombinant fusion protein containing a sequence corresponding to amino acids 284-543 of human BTD (NP\_000051.1).

### Synonyms

BTD

## Contact

 | 400-999-6126

 | [cn.market@abclonal.com.cn](mailto:cn.market@abclonal.com.cn)

 | [www.abclonal.com.cn](http://www.abclonal.com.cn)

## Product Information

### Source

Rabbit

### Isotype

IgG

### Purification

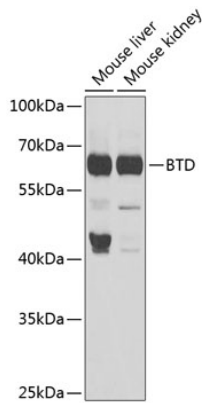
Affinity purification

### Storage

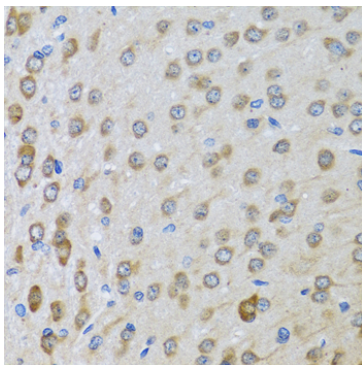
Store at -20°C. Avoid freeze / thaw cycles.

Buffer: PBS with 0.02% sodium azide, 50% glycerol, pH 7.3.

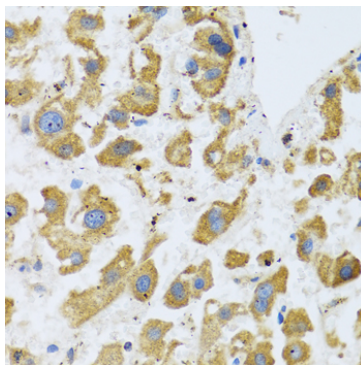
## Validation Data



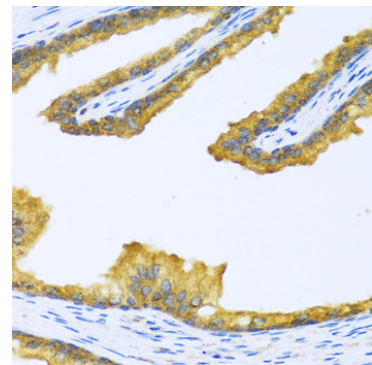
Western blot analysis of various lysates using BTD Rabbit pAb (A6284) at 1:1000 dilution. Secondary antibody: HRP Goat Anti-Rabbit IgG (H+L) (AS014) at 1:10000 dilution. Lysates/proteins: 25µg per lane. Blocking buffer: 3% nonfat dry milk in TBST. Detection: ECL Enhanced Kit (RM00021). Exposure time: 90s.



Immunohistochemistry analysis of paraffin-embedded Rat brain using BTD Rabbit pAb (A6284) at dilution of 1:100 (40x lens). Perform microwave antigen retrieval with 10 mM PBS buffer pH 7.2 before commencing with IHC staining protocol.



Immunohistochemistry analysis of paraffin-embedded Human liver cancer using BTD Rabbit pAb (A6284) at dilution of 1:100 (40x lens). Perform microwave antigen retrieval with 10 mM PBS buffer pH 7.2 before commencing with IHC staining protocol.



Immunohistochemistry analysis of paraffin-embedded Human prostate using BTD Rabbit pAb (A6284) at dilution of 1:100 (40x lens). Perform microwave antigen retrieval with 10 mM PBS buffer pH 7.2 before commencing with IHC staining protocol.