

Melan-A/MART-1 Rabbit pAb

Catalog No.: A6290

Basic Information

Observed MW

19kDa

Calculated MW

13kDa

Category

Primary antibody

Applications

WB,IF/ICC,ELISA

Cross-Reactivity

Human, Mouse, Rat

Background

Located in endoplasmic reticulum membrane; melanosome; and trans-Golgi network.

Recommended Dilutions

WB 1:500 - 1:1000

IF/ICC 1:50 - 1:200

ELISA Recommended starting concentration is 1 µg/mL. Please optimize the concentration based on your specific assay requirements.

Immunogen Information

Gene ID

2315

Swiss Prot

Q16655

Immunogen

Recombinant fusion protein containing a sequence corresponding to amino acids 48-118 of human Melan-A/MART-1 (NP_005502.1).

Synonyms

MART1; MART-1; Melan-A/MART-1

Contact

☎ | 400-999-6126

✉ | cn.market@abclonal.com.cn

🌐 | www.abclonal.com.cn

Product Information

Source

Rabbit

Isotype

IgG

Purification

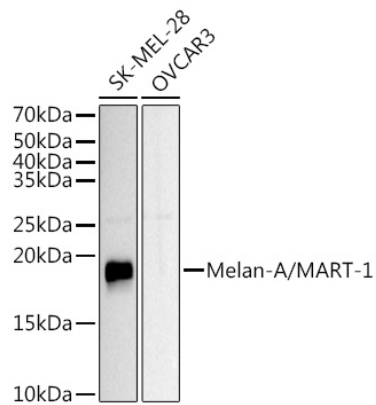
Affinity purification

Storage

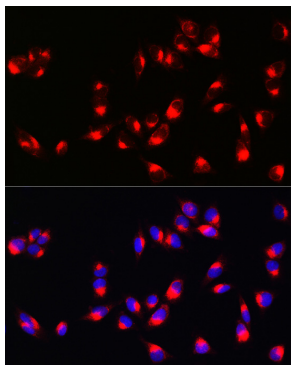
Store at -20°C. Avoid freeze / thaw cycles.

Buffer: PBS with 0.09% Sodium azide,50% glycerol,pH7.3.

Validation Data



Western blot analysis of various lysates using Melan-A/MART-1 Rabbit pAb (A6290) at 1:1000 dilution. Secondary antibody: HRP-conjugated Goat anti-Rabbit IgG (H+L) (AS014) at 1:10000 dilution. Lysates/proteins: 25µg per lane. Blocking buffer: 3% nonfat dry milk in TBST. Detection: ECL Basic Kit (RM00020). Exposure time: 20s.



Immunofluorescence analysis of A375 cells using Melan-A/MART-1 Rabbit pAb (A6290) at dilution of 1:50 (40x lens). Secondary antibody: Cy3-conjugated Goat anti-Rabbit IgG (H+L) (AS007) at 1:500 dilution. Blue: DAPI for nuclear staining.