

# Glucokinase (GCK) Rabbit pAb

Catalog No.: A6293 **7 Publications**

## Basic Information

**Observed MW**

52kDa

**Calculated MW**

52kDa

**Category**

Primary antibody

**Applications**

ELISA,WB

**Cross-Reactivity**

Human, Mouse, Rat

## Background

This gene encodes a member of the hexokinase family of proteins. Hexokinases phosphorylate glucose to produce glucose-6-phosphate, the first step in most glucose metabolism pathways. In contrast to other forms of hexokinase, this enzyme is not inhibited by its product glucose-6-phosphate but remains active while glucose is abundant. The use of multiple promoters and alternative splicing of this gene result in distinct protein isoforms that exhibit tissue-specific expression in the pancreas and liver. In the pancreas, this enzyme plays a role in glucose-stimulated insulin secretion, while in the liver, this enzyme is important in glucose uptake and conversion to glycogen. Mutations in this gene that alter enzyme activity have been associated with multiple types of diabetes and hyperinsulinemic hypoglycemia.

## Recommended Dilutions

WB 1:500 - 1:2000

## Immunogen Information

**Gene ID**

2645

**Swiss Prot**

P35557

**Immunogen**

Recombinant fusion protein containing a sequence corresponding to amino acids 1-300 of human Glucokinase (GCK) (NP\_000153.1).

**Synonyms**

GK; GLK; HK4; HHF3; HKIV; HXKP; LGLK; MODY2; PNDM1; FGQTL3; Glucokinase (GCK)

## Contact

 | 400-999-6126 | [cn.market@abclonal.com.cn](mailto:cn.market@abclonal.com.cn) | [www.abclonal.com.cn](http://www.abclonal.com.cn)

## Product Information

**Source**

Rabbit

**Isotype**

IgG

**Purification**

Affinity purification

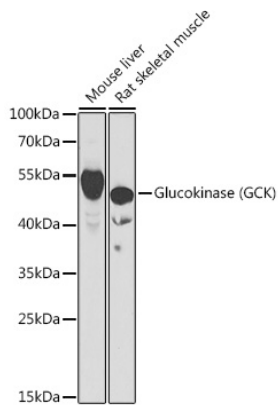
**Storage**

Store at -20°C. Avoid freeze / thaw cycles.

Buffer: PBS with 0.02% sodium azide,50% glycerol,pH7.3.

## Validation Data

---



Western blot analysis of various lysates using Glucokinase (GCK) Rabbit pAb (A6293) at 1:1000 dilution.  
Secondary antibody: HRP Goat Anti-Rabbit IgG (H+L) (AS014) at 1:10000 dilution.  
Lysates/proteins: 25µg per lane.  
Blocking buffer: 3% nonfat dry milk in TBST.  
Detection: ECL Basic Kit (RM00020).  
Exposure time: 60s.