

# Pyruvate carboxylase (PC) Rabbit pAb

**Catalog No.: A6301**

## Basic Information

**Observed MW**

130kDa

**Calculated MW**

130kDa

**Category**

Primary antibody

**Applications**

ELISA,WB,IF/ICC,IP

**Cross-Reactivity**

Human, Mouse, Rat

## Background

This gene encodes pyruvate carboxylase, which requires biotin and ATP to catalyse the carboxylation of pyruvate to oxaloacetate. The active enzyme is a homotetramer arranged in a tetrahedron which is located exclusively in the mitochondrial matrix. Pyruvate carboxylase is involved in gluconeogenesis, lipogenesis, insulin secretion and synthesis of the neurotransmitter glutamate. Mutations in this gene have been associated with pyruvate carboxylase deficiency. Alternatively spliced transcript variants with different 5' UTRs, but encoding the same protein, have been found for this gene.

## Recommended Dilutions

**WB** 1:500 - 1:1000**IF/ICC** 1:10 - 1:100**IP** 0.5µg-4µg antibody for  
200µg-400µg extracts of  
whole cells

## Immunogen Information

**Gene ID**

5091

**Swiss Prot**

P11498

**Immunogen**

Recombinant fusion protein containing a sequence corresponding to amino acids 879-1178 of human Pyruvate carboxylase (Pyruvate carboxylase (PC)) (NP\_001035806.1).

**Synonyms**

PCB; Pyruvate carboxylase (PC)

## Contact

 | 400-999-6126 | [cn.market@abclonal.com.cn](mailto:cn.market@abclonal.com.cn) | [www.abclonal.com.cn](http://www.abclonal.com.cn)

## Product Information

**Source**

Rabbit

**Isotype**

IgG

**Purification**

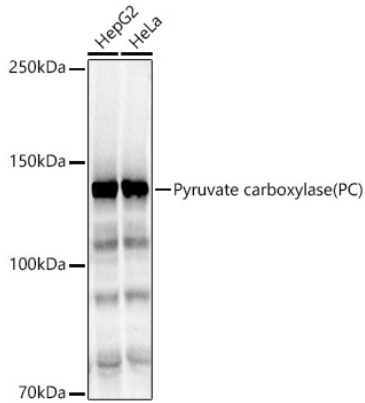
Affinity purification

**Storage**

Store at -20°C. Avoid freeze / thaw cycles.

Buffer: PBS with 0.02% sodium azide,50% glycerol,pH7.3.

## Validation Data



Western blot analysis of various lysates, using Pyruvate carboxylase (PC) Rabbit pAb (A6301) at 1:1000 dilution.

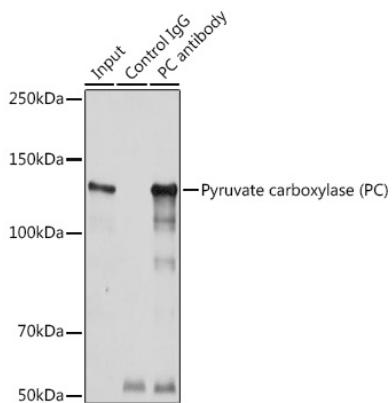
Secondary antibody: HRP Goat Anti-Rabbit IgG (H+L) (AS014) at 1:10000 dilution.

Lysates/proteins: 25µg per lane.

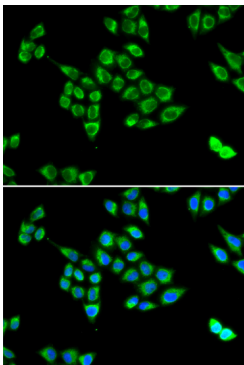
Blocking buffer: 3% nonfat dry milk in TBST.

Detection: ECL Basic Kit (RM00020).

Exposure time: 3s.



Immunoprecipitation analysis of 300 µg extracts of HeLa cells using 3 µg Pyruvate carboxylase (Pyruvate carboxylase (PC)) antibody (A6301). Western blot was performed from the immunoprecipitate using Pyruvate carboxylase (Pyruvate carboxylase (PC)) antibody (A6301) at a dilution of 1:1000.



Immunofluorescence analysis of U2OS cells using Pyruvate carboxylase (PC) Rabbit pAb (A6301). Secondary antibody: Cy3 Goat Anti-Rabbit IgG (H+L) (AS007) at 1:500 dilution. Blue: DAPI for nuclear staining.