

BCAP29 Rabbit pAb

Catalog No.: A6335

Basic Information

Observed MW

28kDa

Calculated MW

28kDa

Category

Primary antibody

Applications

ELISA, WB, IHC-P

Cross-Reactivity

Human, Mouse, Rat

Background

Involved in osteoblast differentiation. Located in membrane.

Recommended Dilutions

WB 1:500 - 1:2000

IHC-P 1:50 - 1:200

Immunogen Information

Gene ID

55973

Swiss Prot

Q9UHQ4

Immunogen

Recombinant fusion protein containing a sequence corresponding to amino acids 125-241 of human BCAP29 (NP_061332.2).

Synonyms

B29; BAP29; BCAP29

Contact

☎ | 400-999-6126

✉ | cn.market@abclonal.com.cn

🌐 | www.abclonal.com.cn

Product Information

Source

Rabbit

Isotype

IgG

Purification

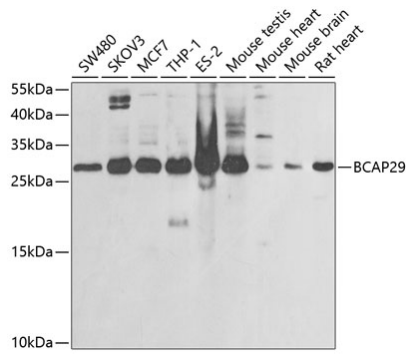
Affinity purification

Storage

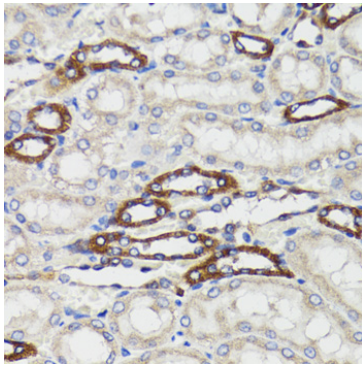
Store at -20°C. Avoid freeze / thaw cycles.

Buffer: PBS with 0.02% sodium azide, 50% glycerol, pH7.3.

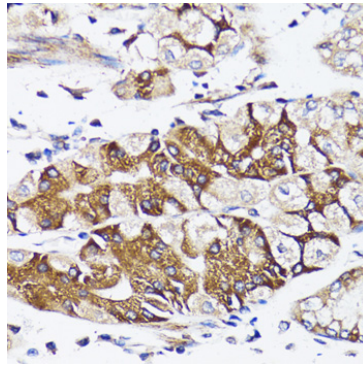
Validation Data



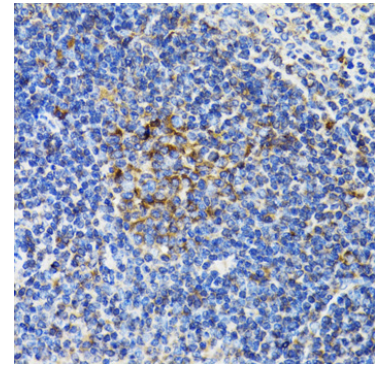
Western blot analysis of various lysates using BCAP29 Rabbit pAb (A6335) at 1:1000 dilution.
Secondary antibody: HRP Goat Anti-Rabbit IgG (H+L) (AS014) at 1:10000 dilution.
Lysates/proteins: 25µg per lane.
Blocking buffer: 3% nonfat dry milk in TBST.
Detection: ECL Enhanced Kit (RM00021).
Exposure time: 30s.



Immunohistochemistry analysis of paraffin-embedded Rat kidney using BCAP29 Rabbit pAb (A6335) at dilution of 1:100 (40x lens). Perform microwave antigen retrieval with 10 mM PBS buffer pH 7.2 before commencing with IHC staining protocol.



Immunohistochemistry analysis of paraffin-embedded Human stomach using BCAP29 Rabbit pAb (A6335) at dilution of 1:100 (40x lens). Perform microwave antigen retrieval with 10 mM PBS buffer pH 7.2 before commencing with IHC staining protocol.



Immunohistochemistry analysis of paraffin-embedded Mouse spleen using BCAP29 Rabbit pAb (A6335) at dilution of 1:100 (40x lens). Perform microwave antigen retrieval with 10 mM PBS buffer pH 7.2 before commencing with IHC staining protocol.