

PCGF1 Rabbit pAb

Catalog No.: A6338

Basic Information

Observed MW

35kDa

Calculated MW

30kDa

Category

Primary antibody

Applications

ELISA, WB, IF/ICC

Cross-Reactivity

Human, Mouse, Rat

Background

PCGF1 is a mammalian homolog of the Drosophila polycomb group genes, which act as transcriptional repressors to regulate anterior-posterior patterning in early embryonic development (Nunes et al., 2001 [PubMed 11287196]). See also PCGF2 (MIM 600346).

Recommended Dilutions

WB 1:500 - 1:1000

IF/ICC 1:50 - 1:200

Immunogen Information

Gene ID

84759

Swiss Prot

Q9BSM1

Immunogen

Recombinant fusion protein containing a sequence corresponding to amino acids 160-259 of human PCGF1 (NP_116062.2).

Synonyms

NSPC1; RNF68; RNF3A-2; 2010002K04Rik; PCGF1

Contact

☎ | 400-999-6126

✉ | cn.market@abclonal.com.cn

🌐 | www.abclonal.com.cn

Product Information

Source

Rabbit

Isotype

IgG

Purification

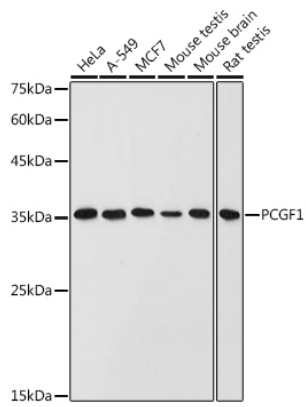
Affinity purification

Storage

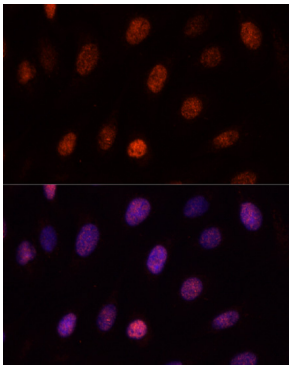
Store at -20°C. Avoid freeze / thaw cycles.

Buffer: PBS with 0.05% proclin300, 50% glycerol, pH7.3.

Validation Data



Western blot analysis of extracts of various cell lines, using PCGF1 antibody (A6338) at 1:1000 dilution.
Secondary antibody: HRP Goat Anti-Rabbit IgG (H+L) (AS014) at 1:10000 dilution.
Lysates/proteins: 25µg per lane.
Blocking buffer: 3% nonfat dry milk in TBST.
Detection: ECL Basic Kit (RM00020).
Exposure time: 30s.



Immunofluorescence analysis of U-2OS cells using PCGF1 antibody (A6338) at dilution of 1:100. Blue: DAPI for nuclear staining.