

INTS4 Rabbit pAb

Catalog No.: A6339

Basic Information

Observed MW

108kDa

Calculated MW

108kDa

Category

Primary antibody

Applications

ELISA, WB, IP

Cross-Reactivity

Human, Mouse, Rat

Background

INTS4 is a subunit of the Integrator complex, which associates with the C-terminal domain of RNA polymerase II large subunit (POLR2A; MIM 180660) and mediates 3-prime end processing of small nuclear RNAs U1 (RNU1; MIM 180680) and U2 (RNU2; MIM 180690) (Baillat et al., 2005 [PubMed 16239144]).

Recommended Dilutions

WB 1:500 - 1:1000

IP 0.5µg-4µg antibody for
200µg-400µg extracts of
whole cells

Immunogen Information

Gene ID

92105

Swiss Prot

Q96HW7

Immunogen

Recombinant fusion protein containing a sequence corresponding to amino acids 1-270 of human INTS4 (NP_291025.3).

Synonyms

INT4; MST093; INTS4

Contact

☎ | 400-999-6126

✉ | cn.market@abclonal.com.cn

🌐 | www.abclonal.com.cn

Product Information

Source

Rabbit

Isotype

IgG

Purification

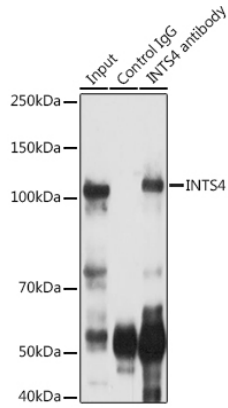
Affinity purification

Storage

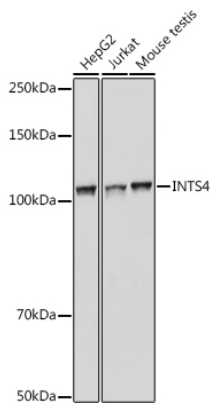
Store at -20°C. Avoid freeze / thaw cycles.

Buffer: PBS with 0.02% sodium azide, 50% glycerol, pH 7.3.

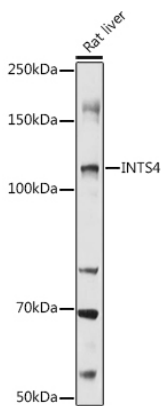
Validation Data



Immunoprecipitation analysis of 300 µg extracts of Jurkat cells using 3 µg INTS4 antibody (A6339). Western blot was performed from the immunoprecipitate using INTS4 antibody (A6339) at a dilution of 1:500.



Western blot analysis of various lysates using INTS4 Rabbit pAb (A6339) at 1:1000 dilution. Secondary antibody: HRP Goat Anti-Rabbit IgG (H+L) (AS014) at 1:10000 dilution. Lysates/proteins: 25µg per lane. Blocking buffer: 3% nonfat dry milk in TBST. Detection: ECL Basic Kit (RM00020). Exposure time: 1s.



Western blot analysis of lysates from Rat liver, using INTS4 Rabbit pAb (A6339) at 1:1000 dilution. Secondary antibody: HRP Goat Anti-Rabbit IgG (H+L) (AS014) at 1:10000 dilution. Lysates/proteins: 25µg per lane. Blocking buffer: 3% nonfat dry milk in TBST. Detection: ECL Basic Kit (RM00020). Exposure time: 30s.