

Fibroblast activation protein- α (FAP) Rabbit pAb

Catalog No.: A6349

14 Publications

Basic Information

Observed MW

90kDa/95kDa

Calculated MW

88kDa

Category

Primary antibody

Applications

ELISA, IF/ICC

Cross-Reactivity

Human, Mouse, Rat

Background

The protein encoded by this gene is a homodimeric integral membrane gelatinase belonging to the serine protease family. It is selectively expressed in reactive stromal fibroblasts of epithelial cancers, granulation tissue of healing wounds, and malignant cells of bone and soft tissue sarcomas. This protein is thought to be involved in the control of fibroblast growth or epithelial-mesenchymal interactions during development, tissue repair, and epithelial carcinogenesis. Alternatively spliced transcript variants encoding different isoforms have been found for this gene.

Recommended Dilutions

IF/ICC 1:50 - 1:200

Immunogen Information

Gene ID

2191

Swiss Prot

Q12884

Immunogen

Recombinant fusion protein containing a sequence corresponding to amino acids 26-760 of human Fibroblast activation protein- α (FAP) (NP_004451.2).

Synonyms

FAPA; SIMP; DPPIV; FAPalpha; Fibroblast activation protein- α (FAP)

Contact

☎ | 400-999-6126

✉ | cn.market@abclonal.com.cn

🌐 | www.abclonal.com.cn

Product Information

Source

Rabbit

Isotype

IgG

Purification

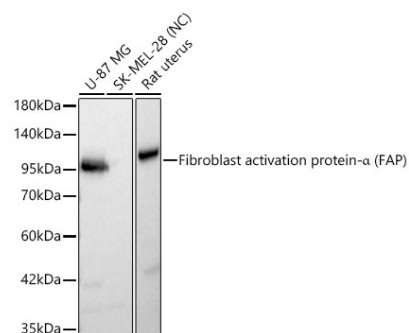
Affinity purification

Storage

Store at -20°C. Avoid freeze / thaw cycles.

Buffer: PBS with 0.01% thimerosal, 50% glycerol, pH7.3.

Validation Data



Western blot analysis of various lysates using Fibroblast activation protein-α (FAP) Rabbit pAb (A6349) at 1:1000 dilution incubated overnight at 4°C.

Secondary antibody: HRP-conjugated Goat anti-Rabbit IgG (H+L) (AS014) at 1:10000 dilution.

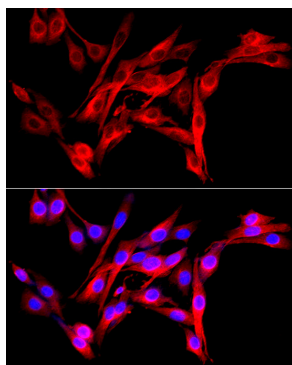
Lysates/proteins: 25 µg per lane.

Blocking buffer: 3% nonfat dry milk in TBST.

Detection: ECL Basic Kit (RM00020).

Negative control (NC): SK-MEL-28

Exposure time: 30s.



Immunofluorescence analysis of PC-12 cells using Fibroblast activation protein-α (FAP)

Rabbit pAb (A6349) at dilution of 1:50 (40x

lens). Secondary antibody: Cy3 Goat Anti-

Rabbit IgG (H+L) (AS007) at 1:500 dilution.

Blue: DAPI for nuclear staining.