

RCC1 Rabbit pAb

Catalog No.: A6350 **2 Publications**

Basic Information

Observed MW

45kDa

Calculated MW

45kDa

Category

Primary antibody

Applications

ELISA, WB, IHC-P, IF/ICC

Cross-Reactivity

Human, Mouse, Rat

Background

Enables several functions, including guanyl-nucleotide exchange factor activity; nucleosomal DNA binding activity; and protein heterodimerization activity. Involved in several processes, including G1/S transition of mitotic cell cycle; regulation of mitotic nuclear division; and spindle organization. Located in chromatin; cytoplasm; and nucleus. Part of protein-containing complex.

Recommended Dilutions

WB	1:1000 - 1:2000
IHC-P	1:50 - 1:200
IF/ICC	1:50 - 1:200

Immunogen Information

Gene ID

1104

Swiss Prot

P18754

Immunogen

Recombinant fusion protein containing a sequence corresponding to amino acids 1-240 of human RCC1 (NP_001260.1).

Synonyms

CHC1; RCC1-I; RCC1

Contact

☎ | 400-999-6126

✉ | cn.market@abclonal.com.cn

🌐 | www.abclonal.com.cn

Product Information

Source

Rabbit

Isotype

IgG

Purification

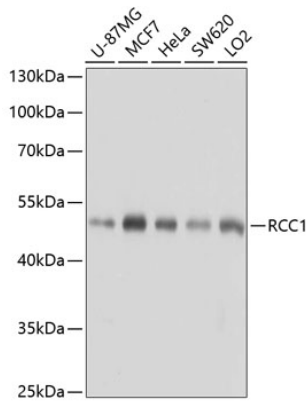
Affinity purification

Storage

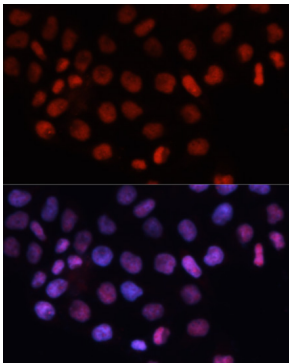
Store at -20°C. Avoid freeze / thaw cycles.

Buffer: PBS with 0.02% sodium azide, 50% glycerol, pH 7.3.

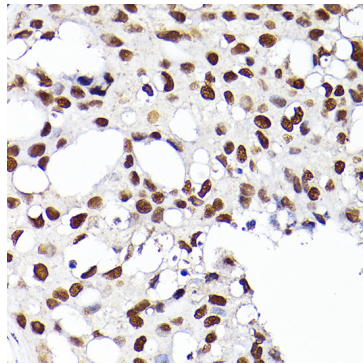
Validation Data



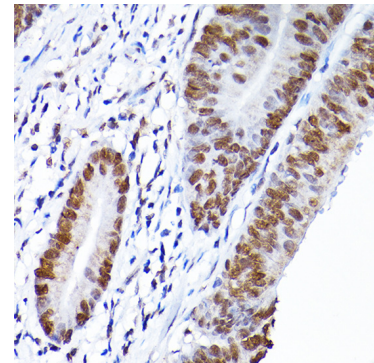
Western blot analysis of various lysates using RCC1 Rabbit pAb (A6350) at 1:1000 dilution.
Secondary antibody: HRP Goat Anti-Rabbit IgG (H+L) (AS014) at 1:10000 dilution.
Lysates/proteins: 25µg per lane.
Blocking buffer: 3% nonfat dry milk in TBST.
Detection: ECL Basic Kit (RM00020).
Exposure time: 5s.



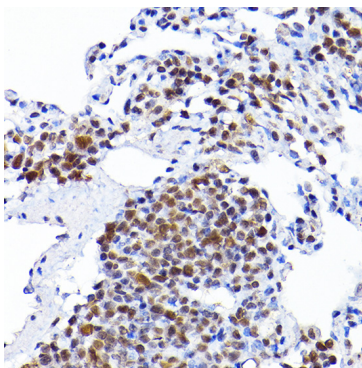
Immunofluorescence analysis of HeLa cells using RCC1 Rabbit pAb (A6350) at dilution of 1:100. Secondary antibody: Cy3 Goat Anti-Rabbit IgG (H+L) (AS007) at 1:500 dilution. Blue: DAPI for nuclear staining.



Immunohistochemistry analysis of paraffin-embedded Human breast cancer using RCC1 Rabbit pAb (A6350) at dilution of 1:200 (40x lens). Perform high pressure antigen retrieval with 10 mM citrate buffer pH 6.0 before commencing with IHC staining protocol.



Immunohistochemistry analysis of paraffin-embedded Human colon carcinoma using RCC1 Rabbit pAb (A6350) at dilution of 1:200 (40x lens). Perform high pressure antigen retrieval with 10 mM citrate buffer pH 6.0 before commencing with IHC staining protocol.



Immunohistochemistry analysis of paraffin-embedded Rat lung using RCC1 Rabbit pAb (A6350) at dilution of 1:200 (40x lens). Perform high pressure antigen retrieval with 10 mM citrate buffer pH 6.0 before commencing with IHC staining protocol.