

C1R Rabbit pAb

Catalog No.: A6360

1 Publications

Basic Information

Observed MW

80kDa

Calculated MW

80kDa

Category

Primary antibody

Applications

IF/ICC,ELISA

Cross-Reactivity

Human, Mouse

Background

This gene encodes a member of the peptidase S1 protein family. The encoded protein is a proteolytic subunit in the complement system C1 complex. The complement system acts as a mediator in the innate immune response by ultimately triggering phagocytosis, inflammation, and rupturing the bacterial cell wall. Mutations in this gene are associated with Ehlers-Danlos Syndrome.

Recommended Dilutions

IF/ICC 1:50 - 1:200

ELISA Recommended starting concentration is 1 µg/mL. Please optimize the concentration based on your specific assay requirements.

Immunogen Information

Gene ID

715

Swiss Prot

P00736

Immunogen

Recombinant fusion protein containing a sequence corresponding to amino acids 466-705 of human C1R (NP_001724.3).

Synonyms

EDS8; EDSPD1; C1R

Contact

☎ | 400-999-6126

✉ | cn.market@abclonal.com.cn

🌐 | www.abclonal.com.cn

Product Information

Source

Rabbit

Isotype

IgG

Purification

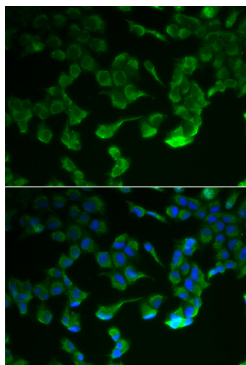
Affinity purification

Storage

Store at -20°C. Avoid freeze / thaw cycles.

Buffer: PBS with 0.02% sodium azide,50% glycerol,pH7.3.

Validation Data



Immunofluorescence analysis of HeLa cells using C1R Rabbit pAb (A6360). Secondary antibody: Cy3-conjugated Goat anti-Rabbit IgG (H+L) (AS007) at 1:500 dilution. Blue: DAPI for nuclear staining.