

C3AR1 Rabbit pAb

Catalog No.: A6361 **1 Publications**

Basic Information

Observed MW

50kDa

Calculated MW

54kDa

Category

Primary antibody

Applications

ELISA, WB

Cross-Reactivity

Human, Mouse, Rat

Background

C3a is an anaphylatoxin released during activation of the complement system. The protein encoded by this gene is an orphan G protein-coupled receptor for C3a. Binding of C3a by the encoded receptor activates chemotaxis, granule enzyme release, superoxide anion production, and bacterial opsonization.

Recommended Dilutions

WB 1:500 - 1:1000

Immunogen Information

Gene ID

719

Swiss Prot

Q16581

Immunogen

Recombinant fusion protein containing a sequence corresponding to amino acids 161-337 of human C3AR1 (NP_004045.1).

Synonyms

AZ3B; C3AR; HNFAG09; C3AR1

Contact

 | 400-999-6126

 | cn.market@abclonal.com.cn

 | www.abclonal.com.cn

Product Information

Source

Rabbit

Isotype

IgG

Purification

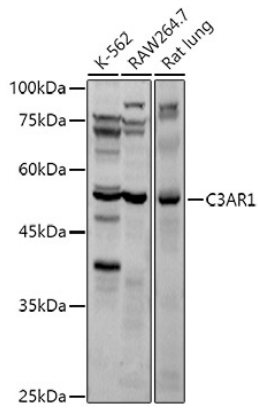
Affinity purification

Storage

Store at -20°C. Avoid freeze / thaw cycles.

Buffer: PBS with 0.01% thimerosal, 50% glycerol, pH7.3.

Validation Data



Western blot analysis of extracts of various cell lines, using C3AR1 antibody (A6361) at 1:1000 dilution.
Secondary antibody: HRP Goat Anti-Rabbit IgG (H+L) (AS014) at 1:10000 dilution.
Lysates/proteins: 25µg per lane.
Blocking buffer: 3% nonfat dry milk in TBST.
Detection: ECL Basic Kit (RM00020).
Exposure time: 20s.