

# C4BPB Rabbit pAb

Catalog No.: A6362 **1 Publications**

## Basic Information

**Observed MW**

28kDa

**Calculated MW**

28kDa

**Category**

Primary antibody

**Applications**

ELISA,WB,IF/ICC

**Cross-Reactivity**

Human, Mouse, Rat

## Background

This gene encodes a member of a superfamily of proteins composed predominantly of tandemly arrayed short consensus repeats of approximately 60 amino acids. A single, unique beta-chain encoded by this gene assembles with seven identical alpha-chains into the predominant isoform of C4b-binding protein, a multimeric protein that controls activation of the complement cascade through the classical pathway. C4b-binding protein has a regulatory role in the coagulation system also, mediated through the beta-chain binding of protein S, a vitamin K-dependent protein that serves as a cofactor of activated protein C. The genes encoding both alpha and beta chains are located adjacent to each other on human chromosome 1 in the regulator of complement activation gene cluster. Alternative splicing gives rise to multiple transcript variants.

## Recommended Dilutions

<b>WB</b>	1:500 - 1:1000
<b>IF/ICC</b>	1:50 - 1:200

## Immunogen Information

**Gene ID**

725

**Swiss Prot**

P20851

**Immunogen**

Recombinant fusion protein containing a sequence corresponding to amino acids 17-251 of human C4BPB (NP\_001017364.1).

**Synonyms**

C4BP; C4BPB

## Contact

	400-999-6126
	cn.market@abclonal.com.cn
	<a href="http://www.abclonal.com.cn">www.abclonal.com.cn</a>

## Product Information

**Source**

Rabbit

**Isotype**

IgG

**Purification**

Affinity purification

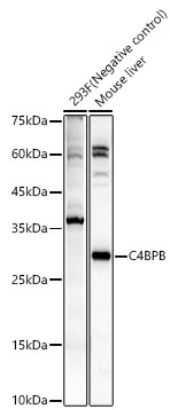
**Storage**

Store at -20°C. Avoid freeze / thaw cycles.

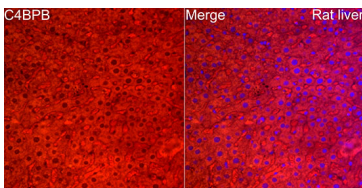
Buffer: PBS with 0.02% sodium azide,50% glycerol,pH7.3.

## Validation Data

---



Western blot analysis of various lysates, using C4BPB Rabbit pAb (A6362) at 1:900 dilution.  
Secondary antibody: HRP Goat Anti-Rabbit IgG (H+L) (AS014) at 1:10000 dilution.  
Lysates/proteins: 25µg per lane.  
Blocking buffer: 3% nonfat dry milk in TBST.  
Detection: ECL Basic Kit (RM00020).  
Exposure time: 10s.



Perform high pressure antigen retrieval with 10 mM citrate buffer pH 6.0 before commencing with IF staining protocol. Immunofluorescence analysis of rat liver cells using C4BPB Rabbit pAb (A6362) at dilution of 1:100 (40x lens). Blue: DAPI for nuclear staining.