

# DBN1 Rabbit pAb

Catalog No.: A6366

1 Publications

## Basic Information

### Observed MW

110kDa

### Calculated MW

71kDa

### Category

Primary antibody

### Applications

ELISA, WB, IF/ICC

### Cross-Reactivity

Human

## Background

The protein encoded by this gene is a cytoplasmic actin-binding protein thought to play a role in the process of neuronal growth. It is a member of the drebrin family of proteins that are developmentally regulated in the brain. A decrease in the amount of this protein in the brain has been implicated as a possible contributing factor in the pathogenesis of memory disturbance in Alzheimer's disease. At least two alternative splice variants encoding different protein isoforms have been described for this gene.

## Recommended Dilutions

WB 1:500 - 1:2000

IF/ICC 1:50 - 1:100

## Immunogen Information

### Gene ID

1627

### Swiss Prot

Q16643

### Immunogen

Recombinant fusion protein containing a sequence corresponding to amino acids 350-649 of human DBN1 (NP\_004386.2).

### Synonyms

D0S117E; DBN1

## Contact

☎ | 400-999-6126

✉ | [cn.market@abclonal.com.cn](mailto:cn.market@abclonal.com.cn)

🌐 | [www.abclonal.com.cn](http://www.abclonal.com.cn)

## Product Information

### Source

Rabbit

### Isotype

IgG

### Purification

Affinity purification

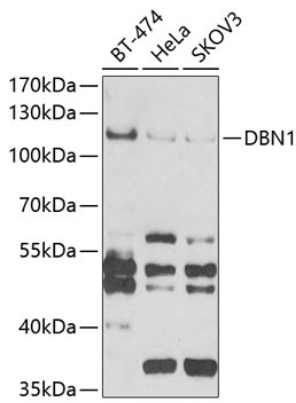
### Storage

Store at -20°C. Avoid freeze / thaw cycles.

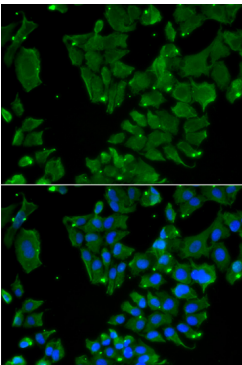
Buffer: PBS with 0.02% sodium azide, 50% glycerol, pH7.3.

## Validation Data

---



Western blot analysis of extracts of various cell lines, using DBN1 antibody (A6366) at 1:1000 dilution.  
Secondary antibody: HRP Goat Anti-Rabbit IgG (H+L) (AS014) at 1:10000 dilution.  
Lysates/proteins: 25µg per lane.  
Blocking buffer: 3% nonfat dry milk in TBST.  
Detection: ECL Basic Kit (RM00020).  
Exposure time: 90s.



Immunofluorescence analysis of HeLa cells using DBN1 antibody (A6366). Blue: DAPI for nuclear staining.