

LIMS1 Rabbit pAb

Catalog No.: A6384

Basic Information

Observed MW

40kDa

Calculated MW

37kDa

Category

Primary antibody

Applications

ELISA, WB, IF/ICC

Cross-Reactivity

Human, Mouse, Rat

Background

The protein encoded by this gene is an adaptor protein which contains five LIM domains, or double zinc fingers. The protein is likely involved in integrin signaling through its LIM domain-mediated interaction with integrin-linked kinase, found in focal adhesion plaques. It is also thought to act as a bridge linking integrin-linked kinase to NCK adaptor protein 2, which is involved in growth factor receptor kinase signaling pathways. Its localization to the periphery of spreading cells also suggests that this protein may play a role in integrin-mediated cell adhesion or spreading. Several transcript variants encoding different isoforms have been found for this gene.

Recommended Dilutions

WB	1:500 - 1:2000
IF/ICC	1:50 - 1:100

Immunogen Information

Gene ID

3987

Swiss Prot

P48059

Immunogen

Recombinant fusion protein containing a sequence corresponding to amino acids 1-325 of human LIMS1 (NP_001180417.1).

Synonyms

PINCH; PINCH1; PINCH-1; LIMS1

Contact

☎ | 400-999-6126

✉ | cn.market@abclonal.com.cn

🌐 | www.abclonal.com.cn

Product Information

Source

Rabbit

Isotype

IgG

Purification

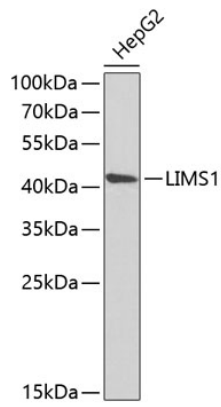
Affinity purification

Storage

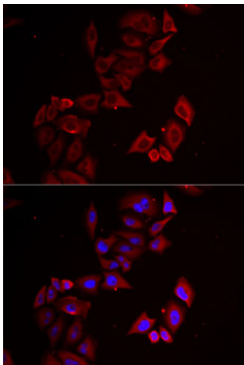
Store at -20°C. Avoid freeze / thaw cycles.

Buffer: PBS with 0.02% sodium azide, 50% glycerol, pH 7.3.

Validation Data



Western blot analysis of extracts of HepG2 cells, using LIMS1 antibody (A6384) at 1:1000 dilution.
Secondary antibody: HRP Goat Anti-Rabbit IgG (H+L) (AS014) at 1:10000 dilution.
Lysates/proteins: 25µg per lane.
Blocking buffer: 3% nonfat dry milk in TBST.
Detection: ECL Enhanced Kit (RM00021).
Exposure time: 90s.



Immunofluorescence analysis of MCF7 cells using LIMS1 antibody (A6384). Blue: DAPI for nuclear staining.