

SERPINB9 Rabbit pAb

Catalog No.: A6393 **1 Publications**

Basic Information

Observed MW

42kDa

Calculated MW

42kDa

Category

Primary antibody

Applications

ELISA, WB, IF/ICC

Cross-Reactivity

Human, Mouse, Rat

Background

This gene encodes a member of the serine protease inhibitor family which are also known as serpins. The encoded protein belongs to a subfamily of intracellular serpins. This protein inhibits the activity of the effector molecule granzyme B. Overexpression of this protein may prevent cytotoxic T-lymphocytes from eliminating certain tumor cells. A pseudogene of this gene is found on chromosome 6.

Recommended Dilutions

WB	1:500 - 1:2000
IF/ICC	1:10 - 1:100

Immunogen Information

Gene ID

5272

Swiss Prot

P50453

Immunogen

Recombinant fusion protein containing a sequence corresponding to amino acids 170-308 of human SERPINB9 (NP_004146.1).

Synonyms

PI9; CAP3; PI-9; CAP-3; SERPINB9

Contact

☎ | 400-999-6126

✉ | cn.market@abclonal.com.cn

🌐 | www.abclonal.com.cn

Product Information

Source

Rabbit

Isotype

IgG

Purification

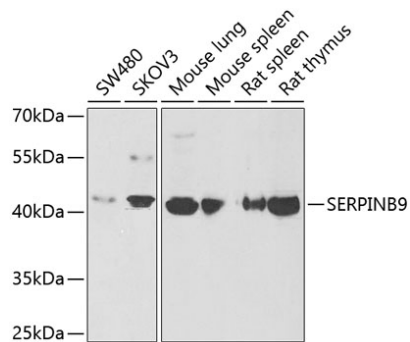
Affinity purification

Storage

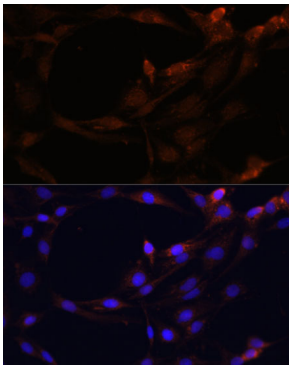
Store at -20°C. Avoid freeze / thaw cycles.

Buffer: PBS with 0.02% sodium azide, 50% glycerol, pH7.3.

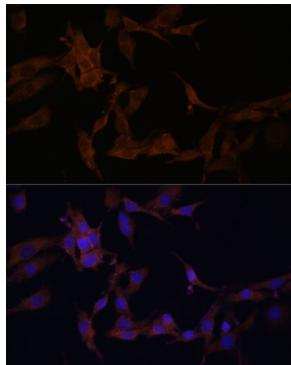
Validation Data



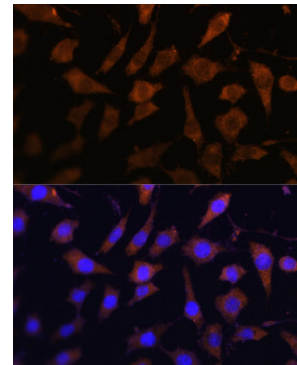
Western blot analysis of extracts of various cell lines, using SERPINB9 antibody (A6393) at 1:1000 dilution. Secondary antibody: HRP Goat Anti-Rabbit IgG (H+L) (AS014) at 1:10000 dilution. Lysates/proteins: 25µg per lane. Blocking buffer: 3% nonfat dry milk in TBST. Detection: ECL Basic Kit (RM00020). Exposure time: 90s.



Immunofluorescence analysis of C6 cells using SERPINB9 antibody (A6393) at dilution of 1:100. Blue: DAPI for nuclear staining.



Immunofluorescence analysis of HeLa cells using SERPINB9 antibody (A6393) at dilution of 1:100. Blue: DAPI for nuclear staining.



Immunofluorescence analysis of L929 cells using SERPINB9 antibody (A6393) at dilution of 1:100. Blue: DAPI for nuclear staining.