

TSPAN7 Rabbit pAb

Catalog No.: A6417

Basic Information

Observed MW

28kDa

Calculated MW

28kDa

Category

Primary antibody

Applications

ELISA,WB,IF/ICC

Cross-Reactivity

Mouse, Rat

Background

The protein encoded by this gene is a member of the transmembrane 4 superfamily, also known as the tetraspanin family. Most of these members are cell-surface proteins that are characterized by the presence of four hydrophobic domains. The proteins mediate signal transduction events that play a role in the regulation of cell development, activation, growth and motility. This encoded protein is a cell surface glycoprotein and may have a role in the control of neurite outgrowth. It is known to complex with integrins. This gene is associated with X-linked cognitive disability and neuropsychiatric diseases such as Huntington's chorea, fragile X syndrome and myotonic dystrophy.

Recommended Dilutions

WB	1:500 - 1:1000
IF/ICC	1:50 - 1:200

Immunogen Information

Gene ID

7102

Swiss Prot

P41732

Immunogen

Recombinant fusion protein containing a sequence corresponding to amino acids 140-240 of human TSPAN7 (NP_004606.2).

Synonyms

A15; MXS1; CD231; MRX58; CCG-B7; TM4SF2; XLID58; TALLA-1; TM4SF2b; DXS1692E; TSPAN7

Contact

☎ | 400-999-6126

✉ | cn.market@abclonal.com.cn

🌐 | www.abclonal.com.cn

Product Information

Source

Rabbit

Isotype

IgG

Purification

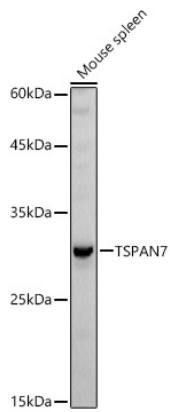
Affinity purification

Storage

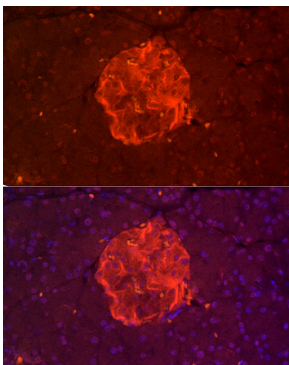
Store at -20°C. Avoid freeze / thaw cycles.

Buffer: PBS with 0.05% proclin300,50% glycerol,pH7.3.

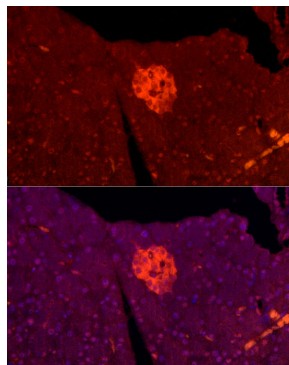
Validation Data



Western blot analysis of extracts of Mouse spleen, using TSPAN7 antibody (A6417) at 1:1000 dilution.
Secondary antibody: HRP Goat Anti-Rabbit IgG (H+L) (AS014) at 1:10000 dilution.
Lysates/proteins: 25µg per lane.
Blocking buffer: 3% nonfat dry milk in TBST.
Detection: ECL Basic Kit (RM00020).
Exposure time: 30s.



Immunofluorescence analysis of Mouse pancreas cells using TSPAN7 Rabbit pAb (A6417) at dilution of 1:200 (40x lens). Blue: DAPI for nuclear staining.



Immunofluorescence analysis of Rat Pancreas cells using TSPAN7 Rabbit pAb (A6417) at dilution of 1:200 (40x lens). Blue: DAPI for nuclear staining.