

CLEC3B/Tetranectin Rabbit pAb

Catalog No.: A6418

Basic Information

Observed MW

Refer to figures

Calculated MW

21kDa

Category

Primary antibody

Applications

ELISA,IF/ICC

Cross-Reactivity

Human

Background

Enables calcium ion binding activity; heparin binding activity; and kringle domain binding activity. Involved in bone mineralization and cellular response to transforming growth factor beta stimulus. Located in cytoplasm; extracellular space; and granular component. Part of collagen-containing extracellular matrix. Implicated in osteoarthritis.

Recommended Dilutions

IF/ICC 1:10 - 1:100

Immunogen Information

Gene ID

7123

Swiss Prot

P05452

Immunogen

Recombinant fusion protein containing a sequence corresponding to amino acids 22-202 of human CLEC3B/Tetranectin (NP_003269.2).

Synonyms

TN; TNA; MCDR4; CLEC3B/Tetranectin

Contact

☎ | 400-999-6126

✉ | cn.market@abclonal.com.cn

🌐 | www.abclonal.com.cn

Product Information

Source

Rabbit

Isotype

IgG

Purification

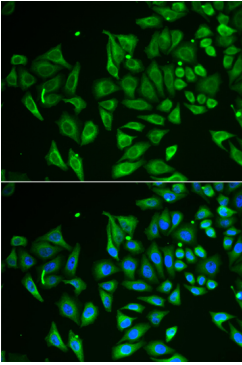
Affinity purification

Storage

Store at -20°C. Avoid freeze / thaw cycles.

Buffer: PBS with 0.02% sodium azide,50% glycerol,pH7.3.

Validation Data



Immunofluorescence analysis of HeLa cells using CLEC3B/Tetranectin antibody (A6418). Blue: DAPI for nuclear staining.