

# [KO Validated] C21orf33 Rabbit pAb

Catalog No.: A6429 **KO Validated**

## Basic Information

### Observed MW

25kDa

### Calculated MW

24kDa/28kDa

### Category

Primary antibody

### Applications

ELISA, WB, IF/ICC

### Cross-Reactivity

Human, Mouse, Rat

## Background

This gene encodes a potential mitochondrial protein that is a member of the DJ-1/Pfpl gene family. This protein is overexpressed in fetal Down syndrome brain. Alternate splicing results in multiple transcript variants.

## Recommended Dilutions

WB 1:500 - 1:1000

IF/ICC 1:10 - 1:100

## Immunogen Information

### Gene ID

8209

### Swiss Prot

P30042

### Immunogen

Recombinant fusion protein containing a sequence corresponding to amino acids 42-268 of human C21orf33 (NP\_004640.4).

### Synonyms

ES1; HES1; KNPH; KNPI; GT335; GATD3A; C21orf33; 33

## Contact

☎ | 400-999-6126

✉ | [cn.market@abclonal.com.cn](mailto:cn.market@abclonal.com.cn)

🌐 | [www.abclonal.com.cn](http://www.abclonal.com.cn)

## Product Information

### Source

Rabbit

### Isotype

IgG

### Purification

Affinity purification

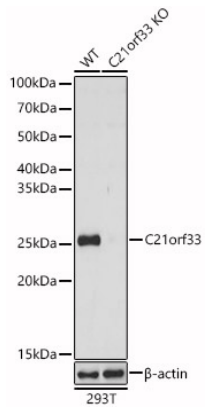
### Storage

Store at -20°C. Avoid freeze / thaw cycles.

Buffer: PBS with 0.02% sodium azide, 50% glycerol, pH 7.3.

## Validation Data

---



Western blot analysis of extracts from wild type (WT) and C21orf33 knockout (KO) 293T (KO) cells, using C21orf33 antibody (A6429) at 1:1000 dilution.

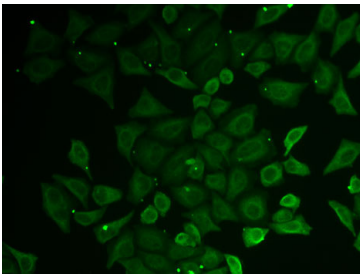
Secondary antibody: HRP Goat Anti-Rabbit IgG (H+L) (AS014) at 1:10000 dilution.

Lysates/proteins: 25µg per lane.

Blocking buffer: 3% nonfat dry milk in TBST.

Detection: ECL Basic Kit (RM00020).

Exposure time: 1s.



Immunofluorescence analysis of U2OS cells using C21orf33 antibody (A6429).