

LYVE1 Rabbit pAb

Catalog No.: A6452

Basic Information

Observed MW

60kDa

Calculated MW

35kDa

Category

Primary antibody

Applications

ELISA, WB

Cross-Reactivity

Human, Mouse

Background

This gene encodes a type I integral membrane glycoprotein. The encoded protein acts as a receptor and binds to both soluble and immobilized hyaluronan. This protein may function in lymphatic hyaluronan transport and have a role in tumor metastasis.

Recommended Dilutions

WB 1:500 - 1:1000

Immunogen Information

Gene ID

10894

Swiss Prot

Q9Y5Y7

Immunogen

Recombinant fusion protein containing a sequence corresponding to amino acids 20-238 of human LYVE1 (NP_006682.2).

Synonyms

HAR; XLKD1; LYVE-1; CRSBP-1; LYVE1

Contact

☎ | 400-999-6126

✉ | cn.market@abclonal.com.cn

🌐 | www.abclonal.com.cn

Product Information

Source

Rabbit

Isotype

IgG

Purification

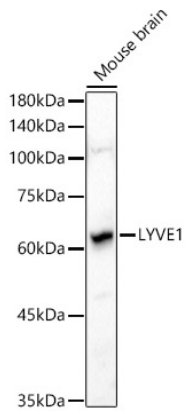
Affinity purification

Storage

Store at -20°C. Avoid freeze / thaw cycles.

Buffer: PBS with 0.05% proclin300, 50% glycerol, pH7.3.

Validation Data



Western blot analysis of extracts of Mouse brain, using LYVE1 antibody (A6452) at 1:1000 dilution.
Secondary antibody: HRP Goat Anti-Rabbit IgG (H+L) (AS014) at 1:10000 dilution.
Lysates/proteins: 25µg per lane.
Blocking buffer: 3% nonfat dry milk in TBST.
Detection: ECL Basic Kit (RM00020).
Exposure time: 90s.