

# GNL3 Rabbit pAb

Catalog No.: A6459 **1 Publications**

## Basic Information

### Observed MW

62kDa

### Calculated MW

62kDa

### Category

Primary antibody

### Applications

ELISA, WB, IF/ICC, IP

### Cross-Reactivity

Human

## Background

The protein encoded by this gene may interact with p53 and may be involved in tumorigenesis. The encoded protein also appears to be important for stem cell proliferation. This protein is found in both the nucleus and nucleolus. Three transcript variants encoding two different isoforms have been found for this gene.

## Recommended Dilutions

**WB** 1:500 - 1:2000

**IF/ICC** 1:10 - 1:100

**IP** 0.5µg-4µg antibody for  
200µg-400µg extracts of  
whole cells

## Immunogen Information

### Gene ID

26354

### Swiss Prot

Q9BVP2

### Immunogen

Recombinant fusion protein containing a sequence corresponding to amino acids 1-240 of human GNL3 (NP\_996562.1).

### Synonyms

NS; E2IG3; NNP47; C77032; GNL3

## Contact

 | 400-999-6126

 | [cn.market@abclonal.com.cn](mailto:cn.market@abclonal.com.cn)

 | [www.abclonal.com.cn](http://www.abclonal.com.cn)

## Product Information

### Source

Rabbit

### Isotype

IgG

### Purification

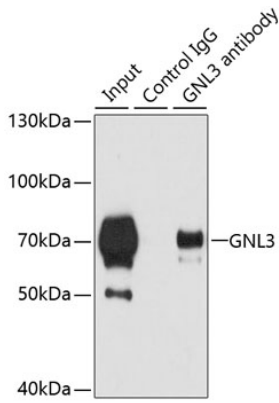
Affinity purification

### Storage

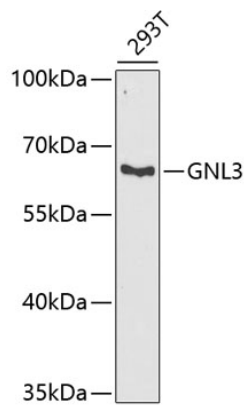
Store at -20°C. Avoid freeze / thaw cycles.

Buffer: PBS with 0.02% sodium azide, 50% glycerol, pH7.3.

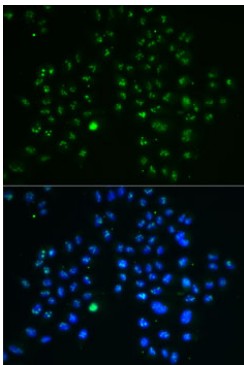
## Validation Data



Immunoprecipitation analysis of 200  $\mu$ g extracts of 293T cells using 3  $\mu$ g GNL3 antibody (A6459). Western blot was performed from the immunoprecipitate using GNL3 antibody (A6459) at a dilution of 1:500.



Western blot analysis of lysates from 293T cells, using GNL3 Rabbit pAb (A6459) at 1:1000 dilution. Secondary antibody: HRP Goat Anti-Rabbit IgG (H+L) (AS014) at 1:10000 dilution. Lysates/proteins: 25 $\mu$ g per lane. Blocking buffer: 3% nonfat dry milk in TBST. Detection: ECL Basic Kit (RM00020). Exposure time: 90s.



Immunofluorescence analysis of MCF7 cells using GNL3 Rabbit pAb (A6459). Secondary antibody: Cy3 Goat Anti-Rabbit IgG (H+L) (AS007) at 1:500 dilution. Blue: DAPI for nuclear staining.