

AHSP Rabbit pAb

Catalog No.: A6465

2 Publications

Basic Information

Observed MW

12kDa

Calculated MW

12kDa

Category

Primary antibody

Applications

WB, ELISA

Cross-Reactivity

Mouse, Rat

Background

This gene encodes a molecular chaperone which binds specifically to free alpha-globin and is involved in hemoglobin assembly. The encoded protein binds to monomeric alpha-globin until it has been transferred to beta-globin to form a heterodimer, which in turn binds to another heterodimer to form the stable tetrameric hemoglobin. Alternative splicing results in multiple transcript variants.

Recommended Dilutions

WB 1:500 - 1:2000

ELISA Recommended starting concentration is 1 µg/mL. Please optimize the concentration based on your specific assay requirements.

Immunogen Information

Gene ID

51327

Swiss Prot

Q9NZD4

Immunogen

Recombinant protein (or fragment). This information is considered to be commercially sensitive.

Synonyms

EDRF; ERAF; AHSP

Contact

☎ | 400-999-6126

✉ | cn.market@abclonal.com.cn

🌐 | www.abclonal.com.cn

Product Information

Source

Rabbit

Isotype

IgG

Purification

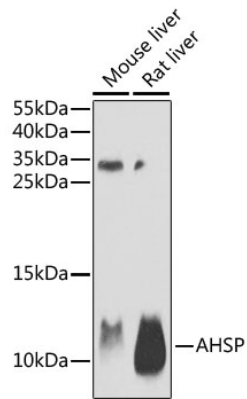
Affinity purification

Storage

Store at -20°C. Avoid freeze / thaw cycles.

Buffer: PBS containing 50% glycerol, preserved with proclin300 or sodium azide (as specified on the Certificate of Analysis), pH 7.3.

Validation Data



Western blot analysis of various lysates using AHSP Rabbit pAb (A6465) at 1:1000 dilution.
Secondary antibody: HRP-conjugated Goat anti-Rabbit IgG (H+L) (AS014) at 1:10000 dilution.
Lysates/proteins: 25 μ g per lane.
Blocking buffer: 3% nonfat dry milk in TBST.
Detection: ECL Basic Kit (RM00020).
Exposure time: 15s.