

SMYD2 Rabbit pAb

Catalog No.: A6474 **2 Publications**

Basic Information

Observed MW

50kDa

Calculated MW

50kDa

Category

Primary antibody

Applications

ELISA,WB,IF/ICC

Cross-Reactivity

Human, Mouse

Background

SET domain-containing proteins, such as SMYD2, catalyze lysine methylation (Brown et al., 2006 [PubMed 16805913]).

Recommended Dilutions

WB 1:500 - 1:2000

IF/ICC 1:10 - 1:100

Immunogen Information

Gene ID

56950

Swiss Prot

Q9NRG4

Immunogen

Recombinant fusion protein containing a sequence corresponding to amino acids 1-270 of human SMYD2 (NP_064582.2).

Synonyms

KMT3C; HSKM-B; ZMYND14; SMYD2

Contact

☎ | 400-999-6126

✉ | cn.market@abclonal.com.cn

🌐 | www.abclonal.com.cn

Product Information

Source

Rabbit

Isotype

IgG

Purification

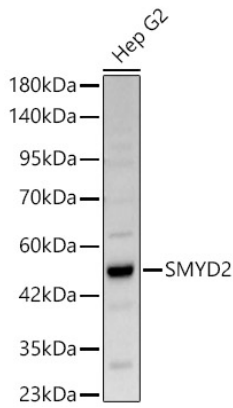
Affinity purification

Storage

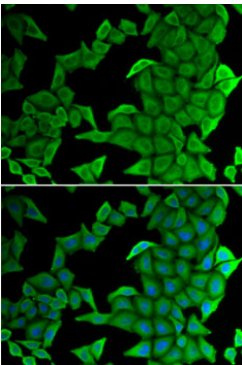
Store at -20°C. Avoid freeze / thaw cycles.

Buffer: PBS with 0.02% sodium azide,50% glycerol,pH7.3.

Validation Data



Western blot analysis of Hep G2, using SMYD2 Rabbit pAb (A6474) at 1:2000 dilution.
Secondary antibody: HRP Goat Anti-Rabbit IgG (H+L) (AS014) at 1:10000 dilution.
Lysates/proteins: 25ug per lane.
Blocking buffer: 3% nonfat dry milk in TBST.
Detection: ECL Basic Kit (RM00020).
Exposure time: 45s.



Immunofluorescence analysis of U2OS cells using SMYD2 antibody (A6474). Blue: DAPI for nuclear staining.