

# KIF2B Rabbit pAb

Catalog No.: A6480 **1 Publications**

## Basic Information

### Observed MW

75kDa

### Calculated MW

76kDa

### Category

Primary antibody

### Applications

ELISA, WB

### Cross-Reactivity

Human, Mouse, Rat

## Background

Predicted to enable microtubule binding activity and microtubule motor activity. Involved in metaphase plate congression; microtubule depolymerization; and regulation of chromosome segregation. Located in intercellular bridge; mitotic spindle; and nucleolus.

## Recommended Dilutions

WB 1:500 - 1:1000

## Immunogen Information

### Gene ID

84643

### Swiss Prot

Q8N4N8

### Immunogen

Recombinant fusion protein containing a sequence corresponding to amino acids 544-673 of human KIF2B (NP\_115948.4).

### Synonyms

KIF2B

## Contact

☎ | 400-999-6126

✉ | [cn.market@abclonal.com.cn](mailto:cn.market@abclonal.com.cn)

🌐 | [www.abclonal.com.cn](http://www.abclonal.com.cn)

## Product Information

### Source

Rabbit

### Isotype

IgG

### Purification

Affinity purification

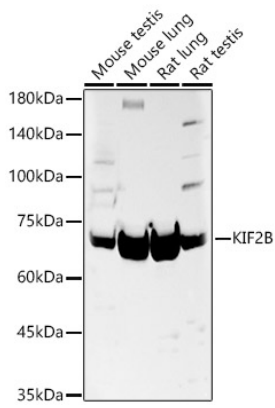
### Storage

Store at -20°C. Avoid freeze / thaw cycles.

Buffer: PBS with 0.02% sodium azide, 50% glycerol, pH 7.3.

## Validation Data

---



Western blot analysis of various lysates, using KIF2B Rabbit pAb (A6480) at 1:1000 dilution.  
Secondary antibody: HRP Goat Anti-Rabbit IgG (H+L) (AS014) at 1:10000 dilution.  
Lysates/proteins: 25µg per lane.  
Blocking buffer: 3% nonfat dry milk in TBST.  
Detection: ECL Basic Kit (RM00020).  
Exposure time: 30s.