

# RFFL Rabbit pAb

Catalog No.: A6489

## Basic Information

### Observed MW

50kDa

### Calculated MW

41kDa

### Category

Primary antibody

### Applications

ELISA, WB

### Cross-Reactivity

Human, Mouse, Rat

## Background

Enables enzyme binding activity; p53 binding activity; and ubiquitin protein ligase activity. Involved in cellular protein metabolic process; negative regulation of cysteine-type endopeptidase activity involved in execution phase of apoptosis; and negative regulation of signal transduction. Located in endosome membrane and plasma membrane.

## Recommended Dilutions

WB 1:500 - 1:2000

## Immunogen Information

### Gene ID

117584

### Swiss Prot

Q8WZ73

### Immunogen

Recombinant fusion protein containing a sequence corresponding to amino acids 1-190 of human RFFL (NP\_001017368.1).

### Synonyms

CARP2; FRING; CARP-2; RNF189; RNF34L; RIFIFYLIN; RFFL

## Contact

☎ | 400-999-6126

✉ | [cn.market@abclonal.com.cn](mailto:cn.market@abclonal.com.cn)

🌐 | [www.abclonal.com.cn](http://www.abclonal.com.cn)

## Product Information

### Source

Rabbit

### Isotype

IgG

### Purification

Affinity purification

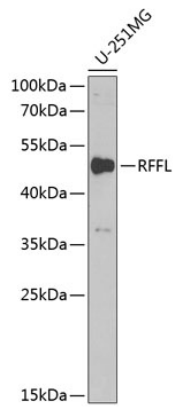
### Storage

Store at -20°C. Avoid freeze / thaw cycles.

Buffer: PBS with 0.02% sodium azide, 50% glycerol, pH 7.3.

## Validation Data

---



Western blot analysis of extracts of U-251MG cells, using RFFL antibody (A6489) at 1:1000 dilution.  
Secondary antibody: HRP Goat Anti-Rabbit IgG (H+L) (AS014) at 1:10000 dilution.  
Lysates/proteins: 25µg per lane.  
Blocking buffer: 3% nonfat dry milk in TBST.  
Detection: ECL Basic Kit (RM00020).  
Exposure time: 40s.