

# GRK1 Rabbit pAb

Catalog No.: A6497 **2 Publications**

## Basic Information

### Observed MW

65kDa

### Calculated MW

64kDa

### Category

Primary antibody

### Applications

ELISA, WB, IHC-P, IF/ICC

### Cross-Reactivity

Human, Mouse, Rat

## Background

This gene encodes a member of the guanine nucleotide-binding protein (G protein)-coupled receptor kinase subfamily of the Ser/Thr protein kinase family. The protein phosphorylates rhodopsin and initiates its deactivation. Defects in GRK1 are known to cause Oguchi disease 2 (also known as stationary night blindness Oguchi type-2).

## Recommended Dilutions

<b>WB</b>	1:200 - 1:2000
<b>IHC-P</b>	1:50 - 1:200
<b>IF/ICC</b>	1:50 - 1:200

## Immunogen Information

### Gene ID

6011

### Swiss Prot

Q15835

### Immunogen

Recombinant fusion protein containing a sequence corresponding to amino acids 1-160 of human GRK1 (NP\_002920.1).

### Synonyms

RK; RHOK; GPRK1; GRK1

## Contact

 | 400-999-6126

 | [cn.market@abclonal.com.cn](mailto:cn.market@abclonal.com.cn)

 | [www.abclonal.com.cn](http://www.abclonal.com.cn)

## Product Information

### Source

Rabbit

### Isotype

IgG

### Purification

Affinity purification

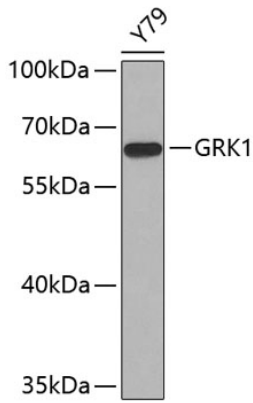
### Storage

Store at -20°C. Avoid freeze / thaw cycles.

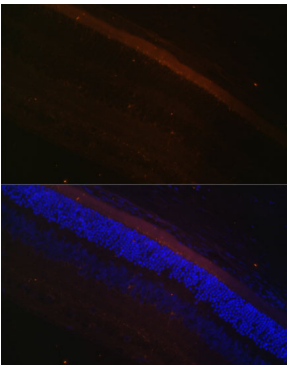
Buffer: PBS with 0.02% sodium azide, 50% glycerol, pH 7.3.

## Validation Data

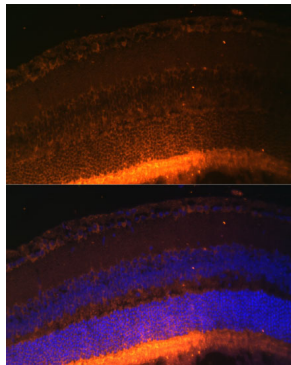
---



Western blot analysis of extracts of Y79 cells, using GRK1 antibody (A6497).  
Secondary antibody: HRP Goat Anti-Rabbit IgG (H+L) (AS014) at 1:10000 dilution.  
Lysates/proteins: 25µg per lane.  
Blocking buffer: 3% nonfat dry milk in TBST.



Immunofluorescence analysis of rat retina using GRK1 Polyclonal Antibody (A6497) at dilution of 1:100 (40x lens). Blue: DAPI for nuclear staining.



Immunofluorescence analysis of mouse retina using GRK1 Polyclonal Antibody (A6497) at dilution of 1:100 (40x lens). Blue: DAPI for nuclear staining.