

DDIT3/CHOP Rabbit pAb

Catalog No.: A6504

4 Publications

Basic Information

Observed MW

27kDa

Calculated MW

19kDa

Category

Primary antibody

Applications

ELISA, WB, IHC-P, IF/ICC

Cross-Reactivity

Human, Mouse, Rat

Background

This gene encodes a member of the CCAAT/enhancer-binding protein (C/EBP) family of transcription factors. The protein functions as a dominant-negative inhibitor by forming heterodimers with other C/EBP members, such as C/EBP and LAP (liver activator protein), and preventing their DNA binding activity. The protein is implicated in adipogenesis and erythropoiesis, is activated by endoplasmic reticulum stress, and promotes apoptosis. Fusion of this gene and FUS on chromosome 16 or EWSR1 on chromosome 22 induced by translocation generates chimeric proteins in myxoid liposarcomas or Ewing sarcoma. Multiple alternatively spliced transcript variants encoding two isoforms with different length have been identified.

Recommended Dilutions

WB	1:500 - 1:2000
IF/ICC	1:50 - 1:200
IHC-P	1:50 - 1:200

Immunogen Information

Gene ID

1649

Swiss Prot

P35638

Immunogen

Recombinant fusion protein containing a sequence corresponding to amino acids 1-100 of human DDIT3/CHOP (NP_004074.2).

Synonyms

CHOP; CEBPZ; CHOP10; CHOP-10; GADD153; AltDDIT3; C/EBPzeta; DDIT3/CHOP

Contact

	400-999-6126
	cn.market@abclonal.com.cn
	www.abclonal.com.cn

Product Information

Source

Rabbit

Isotype

IgG

Purification

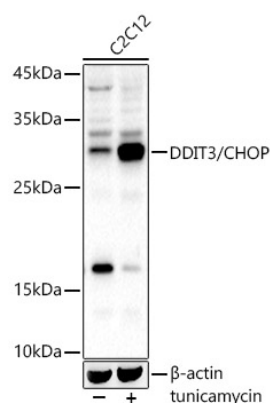
Affinity purification

Storage

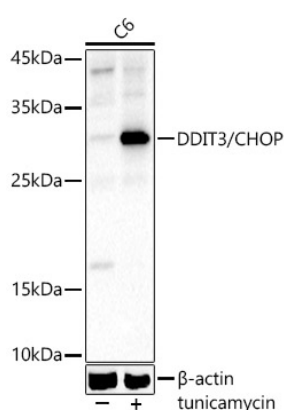
Store at -20°C. Avoid freeze / thaw cycles.

Buffer: PBS with 0.05% proclin300, 50% glycerol, pH7.3.

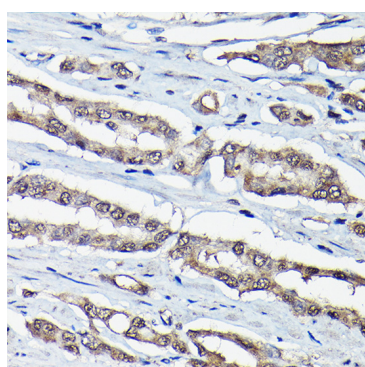
Validation Data



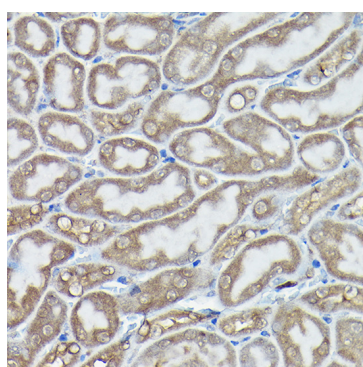
Western blot analysis of lysates from C2C12, using DDIT3/CHOP Rabbit pAb (A6504) at 1:1000 dilution. C2C12 cells were treated by tunicamycin (2 µg/ml) for 8 hours.
Secondary antibody: HRP Goat Anti-Rabbit IgG (H+L) (AS014) at 1:10000 dilution.
Lysates/proteins: 25ug per lane.
Blocking buffer: 3% nonfat dry milk in TBST.
Detection: ECL Basic Kit (RM00020).
Exposure time: 30s.



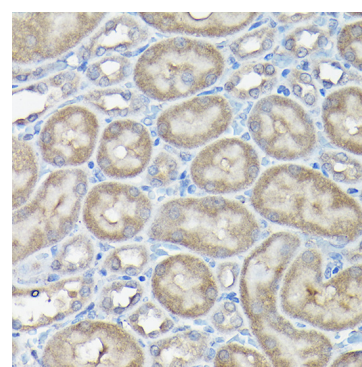
Western blot analysis of lysates from C6, using DDIT3/CHOP Rabbit pAb (A6504) at 1:1000 dilution. C6 cells were treated by tunicamycin (2 µg/ml) for 8 hours.
Secondary antibody: HRP Goat Anti-Rabbit IgG (H+L) (AS014) at 1:10000 dilution.
Lysates/proteins: 25ug per lane.
Blocking buffer: 3% nonfat dry milk in TBST.
Detection: ECL Basic Kit (RM00020).
Exposure time: 30s.



Immunohistochemistry analysis of paraffin-embedded human prostate cancer using DDIT3/CHOP Rabbit pAb (A6504) at dilution of 1:200 (40x lens). Perform high pressure antigen retrieval with 10 mM citrate buffer pH 6.0 before commencing with IHC staining protocol.

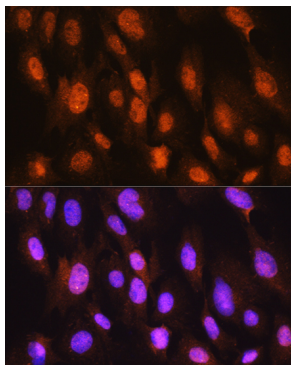


Immunohistochemistry analysis of paraffin-embedded mouse kidney using DDIT3/CHOP Rabbit pAb (A6504) at dilution of 1:200 (40x lens). Perform high pressure antigen retrieval with 10 mM citrate buffer pH 6.0 before commencing with IHC staining protocol.

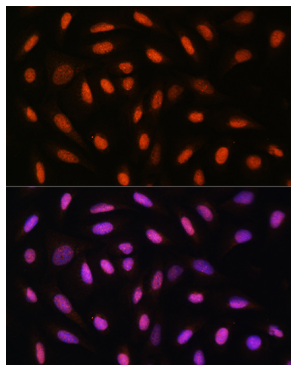


Immunohistochemistry analysis of paraffin-embedded rat kidney using DDIT3/CHOP Rabbit pAb (A6504) at dilution of 1:200 (40x lens). Perform high pressure antigen retrieval with 10 mM citrate buffer pH 6.0 before commencing with IHC staining protocol.

Validation Data



Immunofluorescence analysis of C6 cells using DDIT3/CHOP Rabbit pAb (A6504) at dilution of 1:100. Blue: DAPI for nuclear staining.



Immunofluorescence analysis of U2OS cells using DDIT3/CHOP Rabbit pAb (A6504) at dilution of 1:100. Blue: DAPI for nuclear staining.