

# GLI2 Rabbit pAb

Catalog No.: A6510

1 Publications

## Basic Information

### Observed MW

90kDa

### Calculated MW

168kDa

### Category

Primary antibody

### Applications

ELISA, WB

### Cross-Reactivity

Mouse, Rat

## Background

Enables DNA-binding transcription activator activity, RNA polymerase II-specific; RNA polymerase II cis-regulatory region sequence-specific DNA binding activity; and promoter-specific chromatin binding activity. Acts upstream of or within several processes, including animal organ development; chordate embryonic development; and regulation of smoothened signaling pathway. Located in several cellular components, including axoneme; ciliary tip; and nuclear speck. Is expressed in several structures, including central nervous system; embryo mesenchyme; eye; genitourinary system; and jaw. Human ortholog(s) of this gene implicated in Culler-Jones syndrome; holoprosencephaly 9; and spina bifida. Orthologous to human GLI2 (GLI family zinc finger 2).

## Recommended Dilutions

WB 1:500 - 1:2000

## Immunogen Information

### Gene ID

14633

### Swiss Prot

P10070

### Immunogen

Recombinant fusion protein containing a sequence corresponding to amino acids 1-175 of mus musculus GLI2 (NP\_001074594.1).

### Synonyms

GLI2; CJS; HPE9; PHS2; THP1; THP2; Gli2

## Contact

 | 400-999-6126 | [cn.market@abclonal.com.cn](mailto:cn.market@abclonal.com.cn) | [www.abclonal.com.cn](http://www.abclonal.com.cn)

## Product Information

### Source

Rabbit

### Isotype

IgG

### Purification

Affinity purification

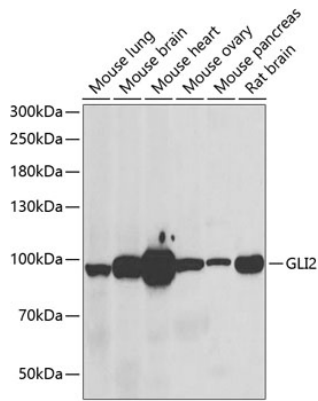
### Storage

Store at -20°C. Avoid freeze / thaw cycles.

Buffer: PBS with 0.02% sodium azide, 50% glycerol, pH 7.3.

## Validation Data

---



Western blot analysis of extracts of various cell lines, using GLI2 antibody (A6510) at 1:1000 dilution.  
Secondary antibody: HRP Goat Anti-Rabbit IgG (H+L) (AS014) at 1:10000 dilution.  
Lysates/proteins: 25 $\mu$ g per lane.  
Blocking buffer: 3% nonfat dry milk in TBST.  
Detection: ECL Basic Kit (RM00020).  
Exposure time: 90s.