

# ATP6AP2 Rabbit pAb

Catalog No.: A6531 **2 Publications**

## Basic Information

### Observed MW

48kDa

### Calculated MW

39kDa

### Category

Primary antibody

### Applications

ELISA, WB

### Cross-Reactivity

Human, Mouse, Rat

## Background

This gene encodes a protein that is associated with adenosine triphosphatases (ATPases). Proton-translocating ATPases have fundamental roles in energy conservation, secondary active transport, acidification of intracellular compartments, and cellular pH homeostasis. There are three classes of ATPases- F, P, and V. The vacuolar (V-type) ATPases have a transmembrane proton-conducting sector and an extramembrane catalytic sector. The encoded protein has been found associated with the transmembrane sector of the V-type ATPases.

## Recommended Dilutions

WB 1:500 - 1:2000

## Immunogen Information

### Gene ID

10159

### Swiss Prot

O75787

### Immunogen

Recombinant fusion protein containing a sequence corresponding to amino acids 251-350 of human ATP6AP2 (NP\_005756.2).

### Synonyms

PRR; M8-9; MRXE; RENR; XMRE; XPDS; CDG2R; HT028; MRXSH; ELDF10; ATP6IP2; MSTP009; APT6M8-9; ATP6M8-9; ATP6AP2

## Contact

☎ | 400-999-6126

✉ | [cn.market@abclonal.com.cn](mailto:cn.market@abclonal.com.cn)

🌐 | [www.abclonal.com.cn](http://www.abclonal.com.cn)

## Product Information

### Source

Rabbit

### Isotype

IgG

### Purification

Affinity purification

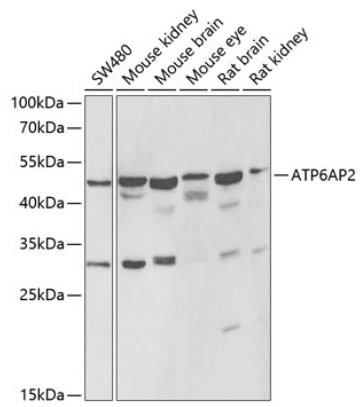
### Storage

Store at -20°C. Avoid freeze / thaw cycles.

Buffer: PBS with 0.02% sodium azide, 50% glycerol, pH7.3.

## Validation Data

---



Western blot analysis of extracts of various cell lines, using ATP6AP2 antibody (A6531) at 1:1000 dilution.  
Secondary antibody: HRP Goat Anti-Rabbit IgG (H+L) (AS014) at 1:10000 dilution.  
Lysates/proteins: 25µg per lane.  
Blocking buffer: 3% nonfat dry milk in TBST.  
Detection: ECL Basic Kit (RM00020).  
Exposure time: 1s.