

BLMH Rabbit pAb

Catalog No.: A6535

1 Publications

Basic Information

Observed MW

50kDa

Calculated MW

53kDa

Category

Primary antibody

Applications

ELISA, WB, IF/ICC

Cross-Reactivity

Human, Mouse, Rat

Background

Bleomycin hydrolase (BMH) is a cytoplasmic cysteine peptidase that is highly conserved through evolution; however, the only known activity of the enzyme is metabolic inactivation of the glycopeptide bleomycin (BLM), an essential component of combination chemotherapy regimens for cancer. The protein contains the signature active site residues of the cysteine protease papain superfamily.

Recommended Dilutions

WB 1:500 - 1:2000

IF/ICC 1:20 - 1:50

Immunogen Information

Gene ID

642

Swiss Prot

Q13867

Immunogen

Recombinant fusion protein containing a sequence corresponding to amino acids 1-300 of human BLMH (NP_000377.1).

Synonyms

BH; BMH; BLMH

Contact

☎ | 400-999-6126

✉ | cn.market@abclonal.com.cn

🌐 | www.abclonal.com.cn

Product Information

Source

Rabbit

Isotype

IgG

Purification

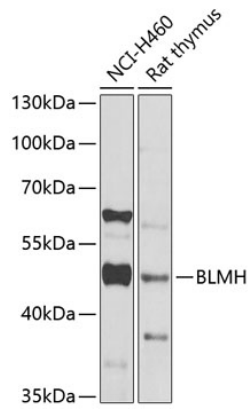
Affinity purification

Storage

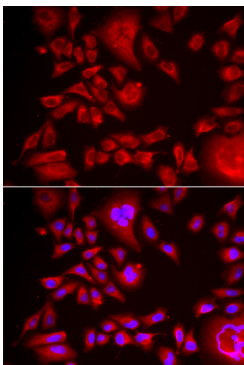
Store at -20°C. Avoid freeze / thaw cycles.

Buffer: PBS with 0.02% sodium azide, 50% glycerol, pH 7.3.

Validation Data



Western blot analysis of extracts of various cell lines, using BLMH Antibody (A6535) at 1:1000 dilution.
Secondary antibody: HRP Goat Anti-Rabbit IgG (H+L) (AS014) at 1:10000 dilution.
Lysates/proteins: 25 μ g per lane.
Blocking buffer: 3% nonfat dry milk in TBST.
Detection: ECL Basic Kit (RM00020).
Exposure time: 30s.



Immunofluorescence analysis of HeLa cells using BLMH antibody (A6535). Blue: DAPI for nuclear staining.