

TCP1 beta/CCT2 Rabbit pAb

Catalog No.: A6546

3 Publications

Basic Information

Observed MW

57kDa

Calculated MW

57kDa

Category

Primary antibody

Applications

ELISA, WB, IF/ICC, IP

Cross-Reactivity

Human, Mouse

Background

The protein encoded by this gene is a molecular chaperone that is a member of the chaperonin containing TCP1 complex (CCT), also known as the TCP1 ring complex (TRiC). This complex consists of two identical stacked rings, each containing eight different proteins. Unfolded polypeptides enter the central cavity of the complex and are folded in an ATP-dependent manner. The complex folds various proteins, including actin and tubulin. Two transcript variants encoding different isoforms have been found for this gene.

Recommended Dilutions

WB 1:500 - 1:2000

IF/ICC 1:50 - 1:200

IP 0.5µg-4µg antibody for
200µg-400µg extracts of
whole cells

Immunogen Information

Gene ID

10576

Swiss Prot

P78371

Immunogen

Recombinant fusion protein containing a sequence corresponding to amino acids 206-535 of human TCP1 beta/TCP1 beta/CCT2 (NP_006422.1).

Synonyms

CCTB; 99D8.1; PRO1633; CCT-beta; HEL-S-100n; TCP-1-beta; TCP1 beta/CCT2

Contact

☎ | 400-999-6126

✉ | cn.market@abclonal.com.cn

🌐 | www.abclonal.com.cn

Product Information

Source

Rabbit

Isotype

IgG

Purification

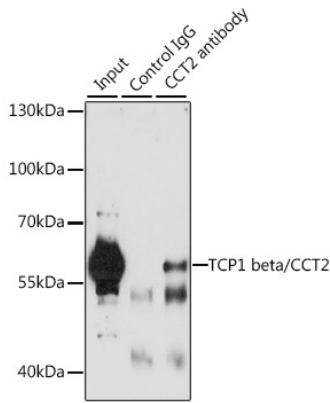
Affinity purification

Storage

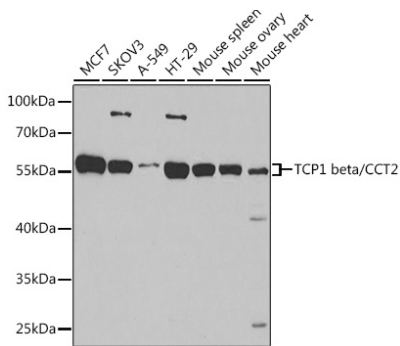
Store at -20°C. Avoid freeze / thaw cycles.

Buffer: PBS with 0.02% sodium azide, 50% glycerol, pH7.3.

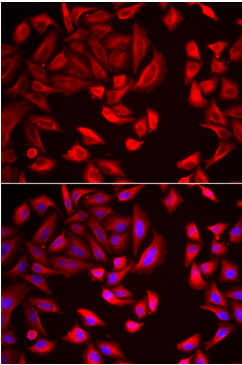
Validation Data



Immunoprecipitation analysis of 200 µg extracts of A-549 cells, using 3 µg TCP1 beta/TCP1 beta/CCT2 antibody (A6546). Western blot was performed from the immunoprecipitate using TCP1 beta/TCP1 beta/CCT2 antibody (A6546) at a dilution of 1:1000.



Western blot analysis of various lysates using TCP1 beta/CCT2 Rabbit pAb (A6546) at 1:1000 dilution. Secondary antibody: HRP Goat Anti-Rabbit IgG (H+L) (AS014) at 1:10000 dilution. Lysates/proteins: 25µg per lane. Blocking buffer: 3% nonfat dry milk in TBST. Detection: ECL Basic Kit (RM00020). Exposure time: 15s.



Immunofluorescence analysis of HeLa cells using TCP1 beta/CCT2 Rabbit pAb (A6546). Secondary antibody: Cy3 Goat Anti-Rabbit IgG (H+L) (AS007) at 1:500 dilution. Blue: DAPI for nuclear staining.