

CCT5 Rabbit pAb

Catalog No.: A6549 **3 Publications**

Basic Information

Observed MW

60kDa

Calculated MW

60kDa

Category

Primary antibody

Applications

ELISA, WB

Cross-Reactivity

Human, Mouse, Rat

Background

The protein encoded by this gene is a molecular chaperone that is a member of the chaperonin containing TCP1 complex (CCT), also known as the TCP1 ring complex (TRiC). This complex consists of two identical stacked rings, each containing eight different proteins. Unfolded polypeptides enter the central cavity of the complex and are folded in an ATP-dependent manner. The complex folds various proteins, including actin and tubulin. Mutations in this gene cause hereditary sensory and autonomic neuropathy with spastic paraplegia (HSNSP). Alternative splicing results in multiple transcript variants. Related pseudogenes have been identified on chromosomes 5 and 13.

Recommended Dilutions

WB 1:500 - 1:2000

Immunogen Information

Gene ID

22948

Swiss Prot

P48643

Immunogen

Recombinant fusion protein containing a sequence corresponding to amino acids 1-270 of human CCT5 (NP_036205.1).

Synonyms

CCTE; HEL-S-69; PNAS-102; CCT-epsilon; TCP-1-epsilon; CCT5

Contact

 | 400-999-6126 | cn.market@abclonal.com.cn | www.abclonal.com.cn

Product Information

Source

Rabbit

Isotype

IgG

Purification

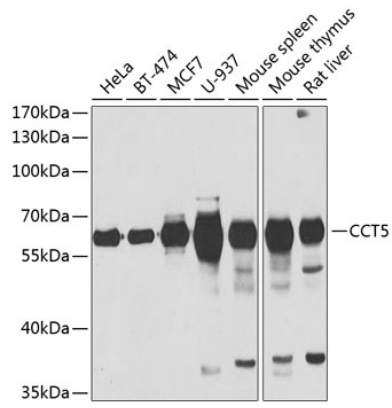
Affinity purification

Storage

Store at -20°C. Avoid freeze / thaw cycles.

Buffer: PBS with 0.02% sodium azide, 50% glycerol, pH 7.3.

Validation Data



Western blot analysis of extracts of various cell lines, using CCT5 antibody (A6549) at 1:1000 dilution.
Secondary antibody: HRP Goat Anti-Rabbit IgG (H+L) (AS014) at 1:10000 dilution.
Lysates/proteins: 25 μ g per lane.
Blocking buffer: 3% nonfat dry milk in TBST.
Detection: ECL Basic Kit (RM00020).
Exposure time: 30s.