

CD1B Rabbit pAb

Catalog No.: A6551

Basic Information

Observed MW

47kDa

Calculated MW

37kDa

Category

Primary antibody

Applications

ELISA, WB

Cross-Reactivity

Human

Background

This gene encodes a member of the CD1 family of transmembrane glycoproteins, which are structurally related to the major histocompatibility complex (MHC) proteins and form heterodimers with beta-2-microglobulin. The CD1 proteins mediate the presentation of primarily lipid and glycolipid antigens of self or microbial origin to T cells. The human genome contains five CD1 family genes organized in a cluster on chromosome 1. The CD1 family members are thought to differ in their cellular localization and specificity for particular lipid ligands. The protein encoded by this gene localizes to late endosomes and lysosomes via a tyrosine-based motif in the cytoplasmic tail, and requires vesicular acidification to bind lipid antigens.

Recommended Dilutions

WB 1:500 - 1:2000

Immunogen Information

Gene ID

910

Swiss Prot

P29016

Immunogen

Recombinant fusion protein containing a sequence corresponding to amino acids 18-303 of human CD1B (NP_001755.1).

Synonyms

R1; CD1; CD1A; CD1B

Contact

☎ | 400-999-6126

✉ | cn.market@abclonal.com.cn

🌐 | www.abclonal.com.cn

Product Information

Source

Rabbit

Isotype

IgG

Purification

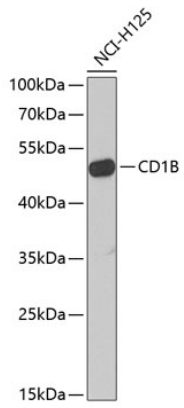
Affinity purification

Storage

Store at -20°C. Avoid freeze / thaw cycles.

Buffer: PBS with 0.02% sodium azide, 50% glycerol, pH7.3.

Validation Data



Western blot analysis of extracts of NCI-H125 cells, using CD1B Antibody (A6551) at 1:1000 dilution.
Secondary antibody: HRP Goat Anti-Rabbit IgG (H+L) (AS014) at 1:10000 dilution.
Lysates/proteins: 25µg per lane.
Blocking buffer: 3% nonfat dry milk in TBST.
Detection: ECL Basic Kit (RM00020).
Exposure time: 90s.