

CENPC Rabbit pAb

Catalog No.: A6557

Basic Information

Observed MW

130kDa

Calculated MW

107kDa

Category

Primary antibody

Applications

ELISA, WB

Cross-Reactivity

Human, Mouse, Rat

Background

Centromere protein C 1 is a centromere autoantigen and a component of the inner kinetochore plate. The protein is required for maintaining proper kinetochore size and a timely transition to anaphase. A putative pseudogene exists on chromosome 12.

Recommended Dilutions

WB 1:500 - 1:2000

Immunogen Information

Gene ID

1060

Swiss Prot

Q03188

Immunogen

Recombinant fusion protein containing a sequence corresponding to amino acids 1-300 of human CENPC (NP_001803.2).

Synonyms

MIF2; hcp-4; CENP-C; CENPC1; CENPC

Contact

 | 400-999-6126

 | cn.market@abclonal.com.cn

 | www.abclonal.com.cn

Product Information

Source

Rabbit

Isotype

IgG

Purification

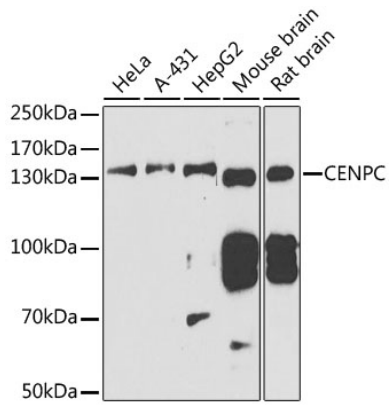
Affinity purification

Storage

Store at -20°C. Avoid freeze / thaw cycles.

Buffer: PBS with 0.02% sodium azide, 50% glycerol, pH7.3.

Validation Data



Western blot analysis of extracts of various cell lines, using CENPC antibody (A6557) at 1:1000 dilution.
Secondary antibody: HRP Goat Anti-Rabbit IgG (H+L) (AS014) at 1:10000 dilution.
Lysates/proteins: 25µg per lane.
Blocking buffer: 3% nonfat dry milk in TBST.
Detection: ECL Basic Kit (RM00020).
Exposure time: 90s.