

# DDX1 Rabbit pAb

Catalog No.: A6575 **1 Publications**

## Basic Information

### Observed MW

83kDa

### Calculated MW

82kDa

### Category

Primary antibody

### Applications

ELISA, WB, IP, IHC-P, IF/ICC

### Cross-Reactivity

Human, Mouse, Rat

## Background

DEAD box proteins, characterized by the conserved motif Asp-Glu-Ala-Asp (DEAD), are putative RNA helicases. They are implicated in a number of cellular processes involving alteration of RNA secondary structure such as translation initiation, nuclear and mitochondrial splicing, and ribosome and spliceosome assembly. Based on their distribution patterns, some members of this family are believed to be involved in embryogenesis, spermatogenesis, and cellular growth and division. This gene encodes a DEAD box protein that acts as an ATP-dependent RNA helicase that has been found to promote coronaviruses replication.

## Recommended Dilutions

<b>WB</b>	1:1000 - 1:5000
<b>IP</b>	0.5µg-4µg antibody for 200µg-400µg extracts of whole cells
<b>IHC-P</b>	1:50 - 1:200
<b>IF/ICC</b>	1:50 - 1:200

## Contact

	400-999-6126
	cn.market@abclonal.com.cn
	www.abclonal.com.cn

## Immunogen Information

### Gene ID

1653

### Swiss Prot

Q92499

### Immunogen

Recombinant fusion protein containing a sequence corresponding to amino acids 441-740 of human DDX1 (NP\_004930.1).

### Synonyms

DBP-RB; UKVH5d; DDX1

## Product Information

### Source

Rabbit

### Isotype

IgG

### Purification

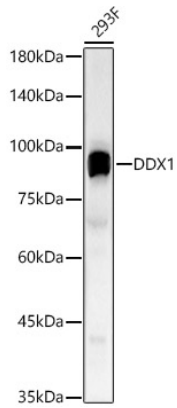
Affinity purification

### Storage

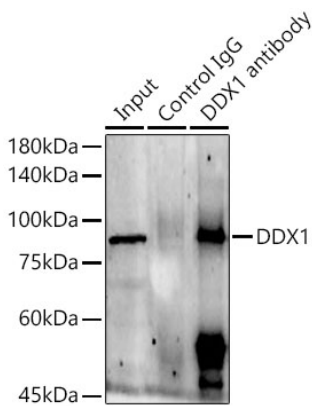
Store at -20°C. Avoid freeze / thaw cycles.

Buffer: PBS with 0.02% sodium azide, 50% glycerol, pH7.3.

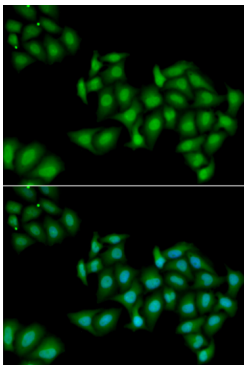
## Validation Data



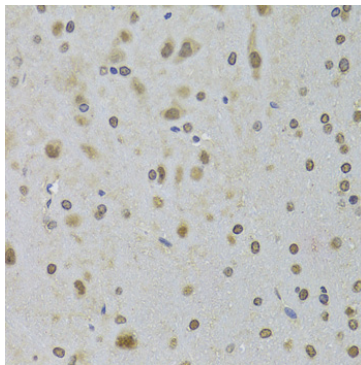
Western blot analysis of lysates from 293F cells, using DDX1 Rabbit pAb (A6575) at 1:2000 dilution. Secondary antibody: HRP Goat Anti-Rabbit IgG (H+L) (AS014) at 1:10000 dilution. Lysates/proteins: 25µg per lane. Blocking buffer: 3% nonfat dry milk in TBST. Detection: ECL Basic Kit (RM00020). Exposure time: 60s.



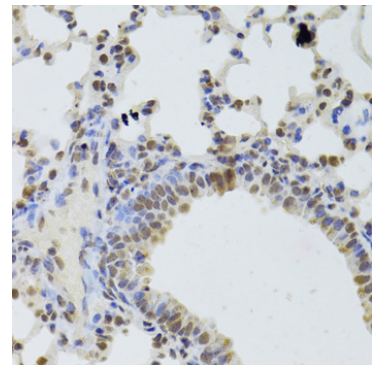
Immunoprecipitation analysis of 300 µg extracts of 293F cells using 3 µg DDX1 Rabbit pAb (A6575). Western blot was performed from the immunoprecipitate using DDX1 Rabbit pAb (A6575) at a dilution of 1:2000.



Immunofluorescence analysis of HeLa cells using DDX1 Rabbit pAb (A6575). Secondary antibody: Cy3 Goat Anti-Rabbit IgG (H+L) (AS007) at 1:500 dilution. Blue: DAPI for nuclear staining.



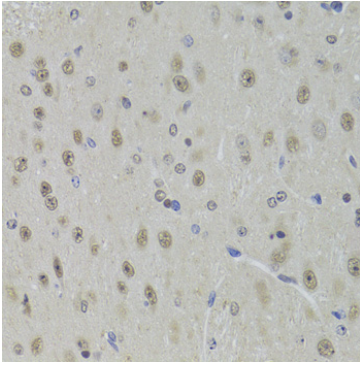
Immunohistochemistry analysis of paraffin-embedded Rat brain using DDX1 Rabbit pAb (A6575) at dilution of 1:100 (40x lens). Perform microwave antigen retrieval with 10 mM PBS buffer pH 7.2 before commencing with IHC staining protocol.



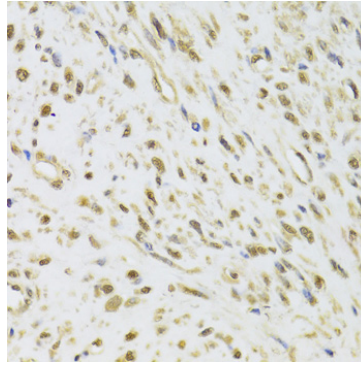
Immunohistochemistry analysis of paraffin-embedded Mouse lung using DDX1 Rabbit pAb (A6575) at dilution of 1:100 (40x lens). Perform microwave antigen retrieval with 10 mM PBS buffer pH 7.2 before commencing with IHC staining protocol.

## Validation Data

---



Immunohistochemistry analysis of paraffin-embedded Mouse brain using DDX1 Rabbit pAb (A6575) at dilution of 1:100 (40x lens). Perform microwave antigen retrieval with 10 mM PBS buffer pH 7.2 before commencing with IHC staining protocol.



Immunohistochemistry analysis of paraffin-embedded Human leiomyoma of uterus using DDX1 Rabbit pAb (A6575) at dilution of 1:100 (40x lens). Perform microwave antigen retrieval with 10 mM PBS buffer pH 7.2 before commencing with IHC staining protocol.