

ENTPD2 Rabbit pAb

Catalog No.: A6584

Basic Information

Observed MW

Refer to Figures

Calculated MW

54kDa

Category

Primary antibody

Applications

ELISA, WB, IF/ICC

Cross-Reactivity

Human

Background

The protein encoded by this gene is the type 2 enzyme of the ecto-nucleoside triphosphate diphosphohydrolase family (E-NTPDase). E-NTPDases are a family of ecto-nucleosidases that hydrolyze 5'-triphosphates. This ecto-ATPase is an integral membrane protein. Alternative splicing of this gene results in multiple transcript variants.

Recommended Dilutions

WB 1:500 - 1:2000

IF/ICC 1:50 - 1:100

Immunogen Information

Gene ID

954

Swiss Prot

Q9Y5L3

Immunogen

Recombinant fusion protein containing a sequence corresponding to amino acids 28-268 of human ENTPD2 (NP_982293.1).

Synonyms

CD39L1; NTPDase-2; ENTPD2

Contact

☎ | 400-999-6126

✉ | cn.market@abclonal.com.cn

🌐 | www.abclonal.com.cn

Product Information

Source

Rabbit

Isotype

IgG

Purification

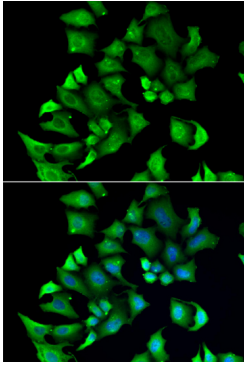
Affinity purification

Storage

Store at -20°C. Avoid freeze / thaw cycles.

Buffer: PBS with 0.02% sodium azide, 50% glycerol, pH7.3.

Validation Data



Immunofluorescence analysis of A549 cells using ENTPD2 antibody (A6584). Blue: DAPI for nuclear staining.